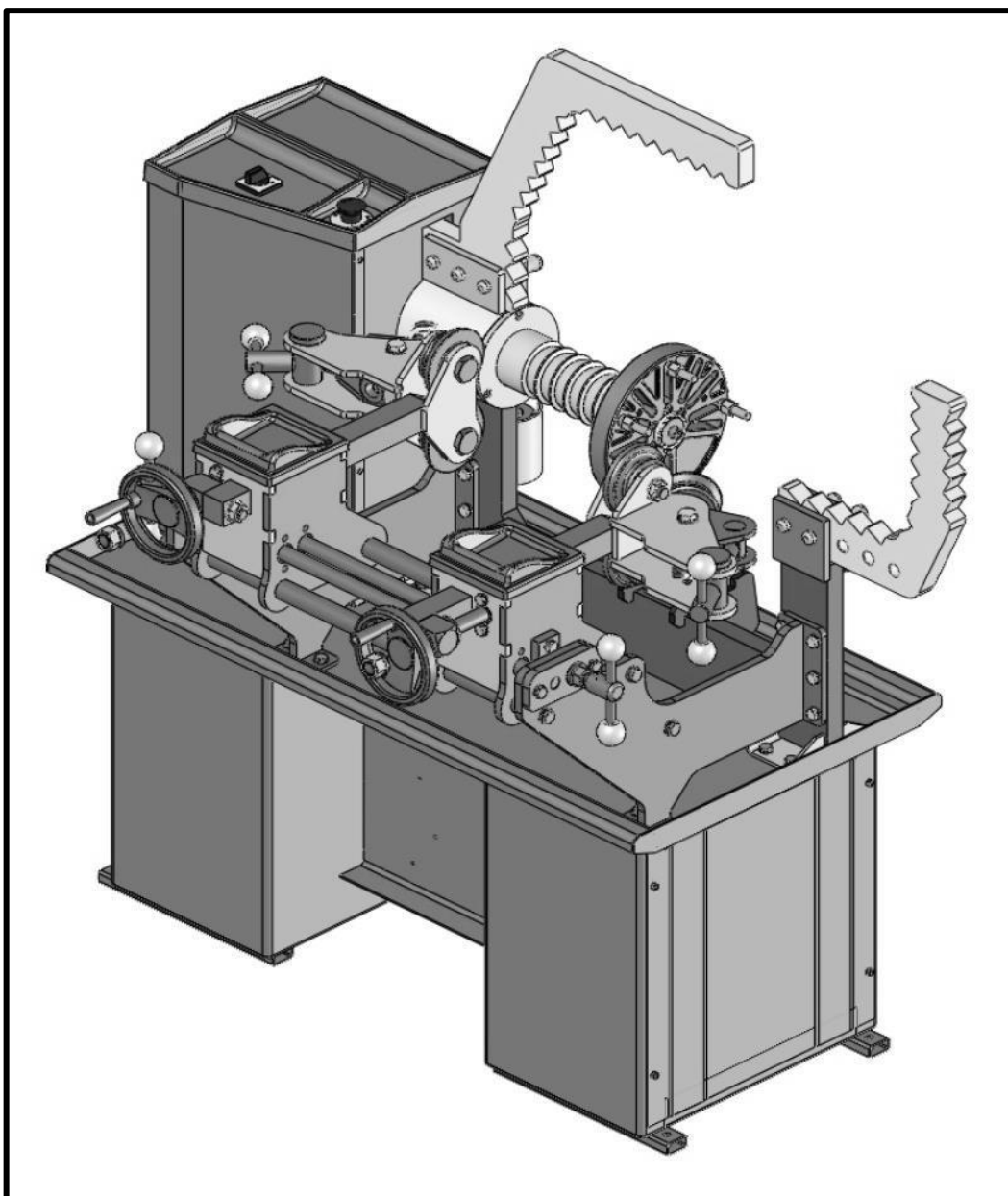


WWW.UNITROL.PL

UNI-TROL
GARAGE EQUIPMENT



INSTRUCTIONS BOOKLET



Correction Roller Wheels

ROLLER

WARNINGS

- This manual is an integral part of this machine. Read the warnings and instructions carefully. This information is important for the safe use and maintenance.
- Please keep this manual for future consultation.

THIS MACHINE

Who repairs damaged wheels, the Rim Press Machine.

This machine is designed to be used for that function. Other use is deemed incorrect and is therefore unacceptable.

The manufacturer not be in charge for, wrong and unacceptable use accidents, occurring as a result

IMPORTANT

This machine must be used only by trained personnel in this regard.

Electrical, hydraulic and pneumatic systems must be performed by professional people in any transaction.

Machine's useful life is 10 years.

TABLE OF CONTENTS

PAGES

General Warnings.....	4
Technical Characteristics	4
Sections of the machine.....	5
Input	6
Safety Precautions.....	6 - 11
Installation of the machine on the ground and Safety Areas.....	7
Electrical Assembly.....	7
Problems - Causes – Remedies.....	7
Operation and Use.....	8 – 9 - 10
Routine Maintenance	12
Technical Service and Spare Parts	12
Electricity Scheme	13
Dismantled picture	14 - 15
Order Parts List.....	16 – 17 – 18
Declaration of Conformity	19

TECHNICAL SPECIFICATIONS

TECHNICAL DATA

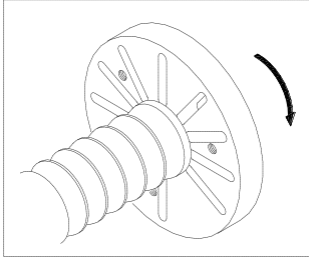
DIMENSIONS

Height..... 1370 mm
Size..... 1340 mm
Width.....1080 mm

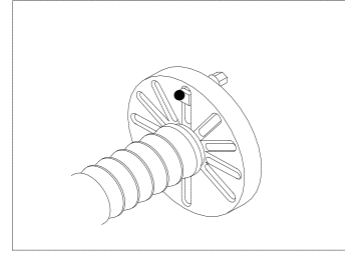
WEIGHT

Net weight..... 368 kg
Sound level..... 75 db

SECTIONS OF THE MACHINE

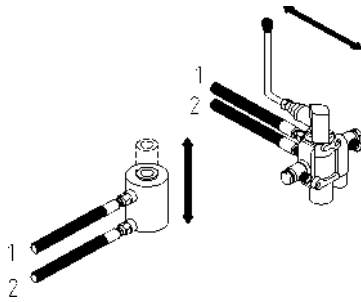


FLANGES must rotate in the direction of the arrow.

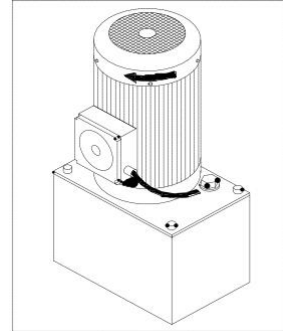


RIMS Mounting Flange

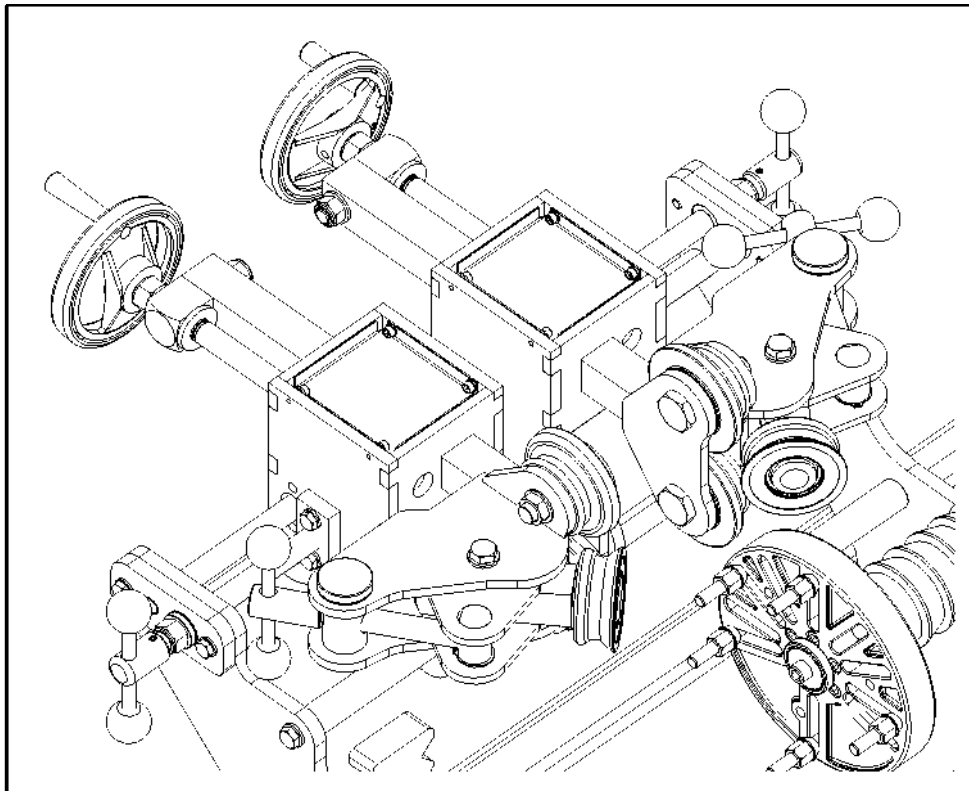
The flange is designed for wheels of different sizes.



The **CONTROL UNIT** controls the movement of the piston.



HYDRAULIC UNIT moves the pistons up and down.



The squashed device is for the improvement of the damaged wheels - squashed process.

INPUT

This brochure is designed for employees, so for professional on the use of these machines and for people who do routine maintenance work. Before taking on the machine an operation, first read the operating instructions

This guide;

- **SAFETY OF WORKERS**
- **Contains information about MACHINE SAFETY.**

CONSERVATION OF USER GUIDE

User and maintenance elements, this guide needs to be available every time they should be stored in a place. Transportation, shipping, start, settings, testing, repair and manufacturers' approved extra care must be done by Professional Person. The manufacturer of the above-mentioned work done by unskilled people and issues that will arise in the event of incorrect use of the machine and accidents are not responsible. This user guide and maintenance elements of the machine is prepared for safe and proper use.

PACKAGING, TRANSPORT, STORAGE

Packing, removal, transportation and unpacking operations, wheels and understands the contents of this manual correction must be made by the person who knows.

PACKAGING

Wheels trimming machine, wood wrapped with stretch film on the package, and has been crating. It weighs about 365 kg.

LIFT AND CARRY

Pallets must be repealed with trans pallets. So that the machine can be lifted and moved to safety, the size - sizes keep in eye.

STORAGE

Packaged machine must be kept in a protected location - 10 ° C to +40 ° C Machines must not be in direct sunlight. If you will use the machine not for a long time: Remove the plug from the socket.

STACKED PACKAGES

Packaging, you can put at least two boxes on each other. During transport, in terms of safety, provide a maximum of two boxes on each other.

THE PACKAGE OPEN

If the packet has arrived, check if the machine is damaged and if parts are missing. Make sure that nothing is damaged when you unpack the machine and make sure that the parts are not covered.

DISPOSAL OF THE PACKAGE

Wooden pallets and stretch film can be used again. Although it is not harmful, keep it out of the reach of children.

SAFETY

- **THIS MASHINE IS FOR THE WHEELS, WHO ARE BETWEEN 10 " - 19"**
- **THIS MACHINE CAN BE ONLY USED FOR WHEEL FIX.**
- **PLEASE PAY ATTENTION TO THE WARNING LABELS ON THE MACHINE**

- **When you hear during the operation of the operator disturbing noises-sound or vibrations, it can be dangerous, immediately, turn the main switch off.**
In this manual - section "Problems - Causes - Remedies" read - to be checked. If the problem persists, call technical service.
- **During the operation use a safety glasses and protective gloves.**
- **Work upright during surgery**

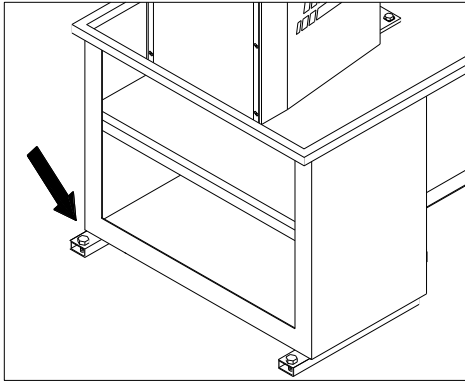
ILLUMINATION: For to make maintain and for the adjustment procedures in this manual, all parts of the machine must be well lit. For the protection of the eyes, all measures should be taken.

- **Please work on isolated and clean surface**
- **During a power failure, the machine turn off please.**
- **As specified, working in a safe work area.**
- **Machine must be installed on a flat surface smooth.**



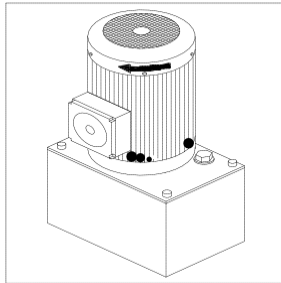
- **NOTE, DO NOT STAND ON THE FRONT OF FLANGE, WHEN IT IS TURNING.**

MACHINE MOUNTING ON GROUND

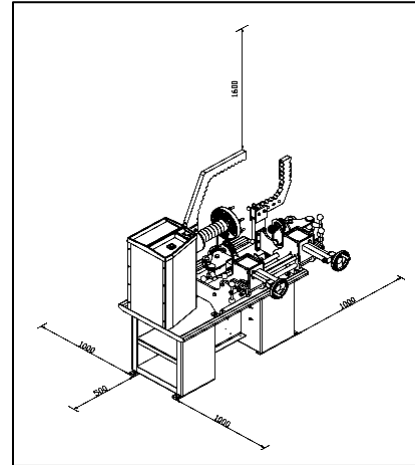


allow the machine to work properly, you must associate it with dowels + screws on ground.

- 1) Pierce the ground with 15 mm diameter.
- 2) Place the machine on the holes and pull the screw firmly
- 3) With meters of torque (25N / m), tighten the screws.

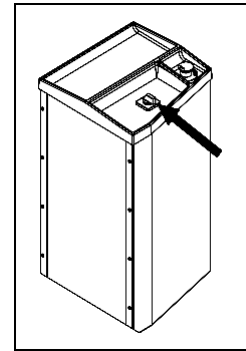


LOCATION



SAFETY AREA:

For safe and ergonomik operation of the machine should be worked in the areas shown.



EACH TRANSACTION IN THE ELECTRICAL SYSTEM SHOULD BE CARRIED OUT BY PROFESSIONAL PEOPLE.

Make sure, that the tag value on the machine with the main voltage are the same.

- Use a corresponding tag in standards of the country where you are located or europe.

Use a grounded plug.

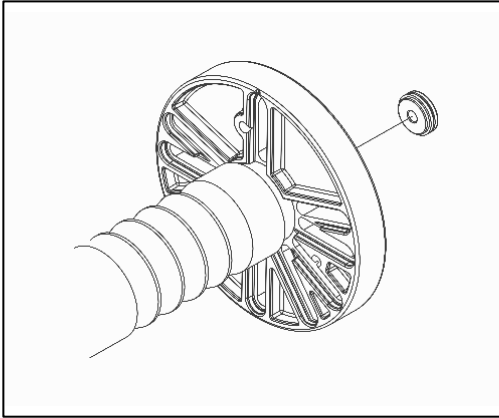
- Check the grounding plug if it is working or not.
- Check whether the connections of the electrical panel is correct.
- Note, when you open the switch, that the direction of rotation of the motor unit in the arrow direction is.
- If it rotates reversely, connection at the plug, change the locations of the two phases.
- If the engine is running abnormally, turn the breaker off. And check the instruction manual "Problems, Causes, Cures".

WHEN THE WARNINGS NOT BE COMPLIED, IS THE MANUFACTURER NOT RESPONSIBLE, FOR ARISE PROBLEMS.

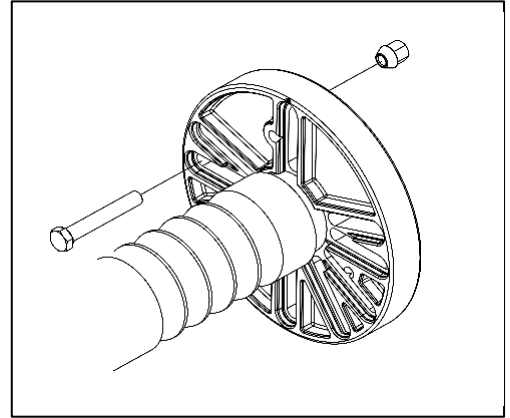
PROBLEMS - CAUSES - REMEDIES

PROBLEMS	CAUSES	REMEDIES
When the Flange does not turn any direction.	<ol style="list-style-type: none"> 1. Plug not plugged in. 2. The plug is not connected correctly. 3. The main voltage is not suitable for machine. 4. The main switch is turned off. 5. The fuse has blown. 	<ol style="list-style-type: none"> 1 – 2 – 3 Check whether the chips and connections are correct. 4. Open the switch. 5. Replace the fuse.
If not enough pressure in the hydraulic unit is.	<ol style="list-style-type: none"> 1. direction of the hydraulic motor is reversed. 2. At the connecting parts is leak of oil 3. Oil in the hydraulic motor is not sufficient. 	<ol style="list-style-type: none"> 1. Turn the two cables in the connection reverse side. 2. Check records, replace if necessary. 3. Please enough oil to the Hydraulic motor until the level in dicator.

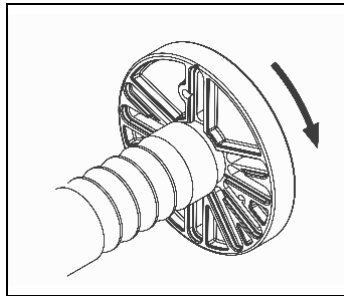
OPERATION AND USE



2. For navel of felges, select an appropriately diameter umbilical flange. Hub flange is sprayed onto a mirror.

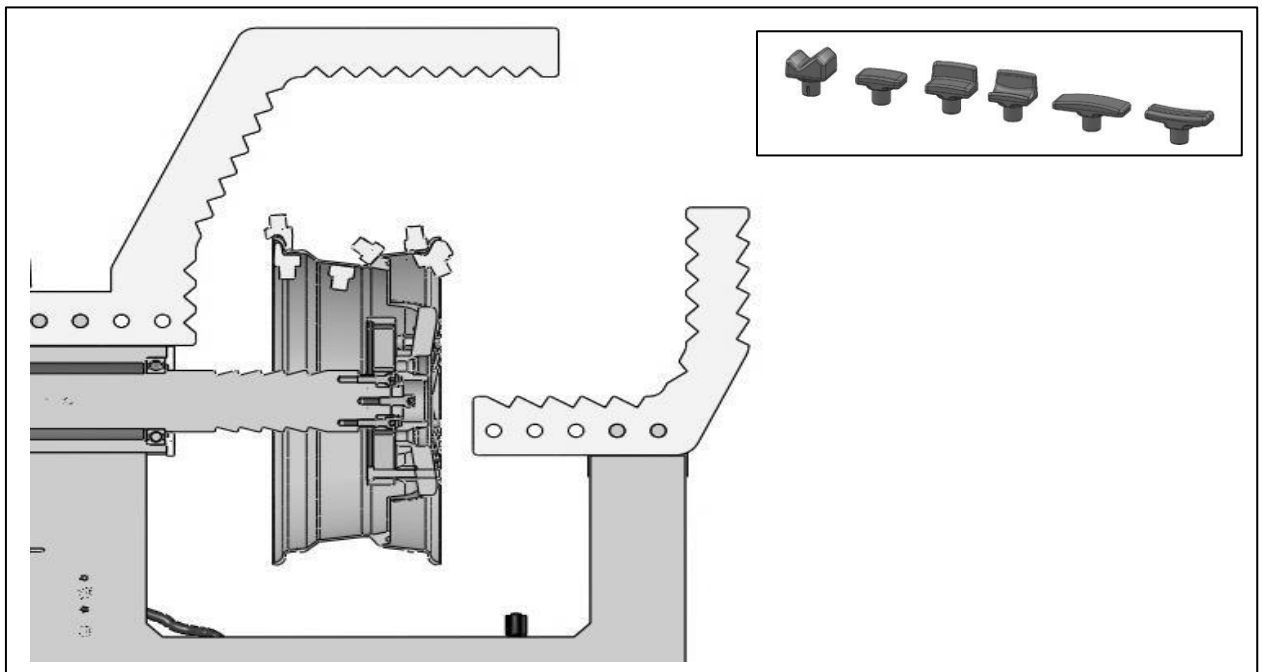


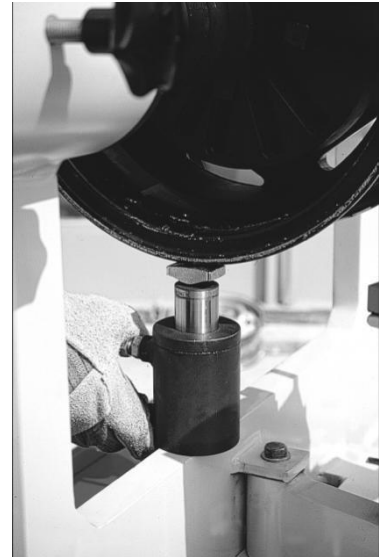
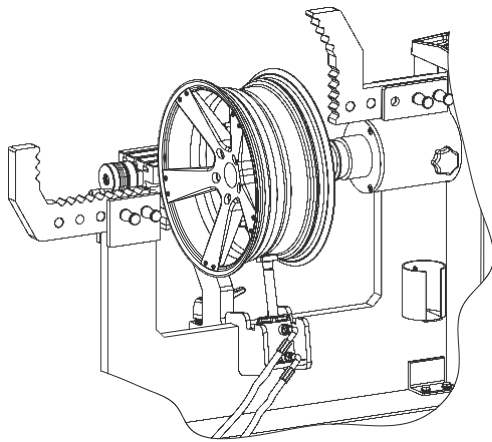
3. Wheels on the mirror according to the channel, with clamping screws are tightened.



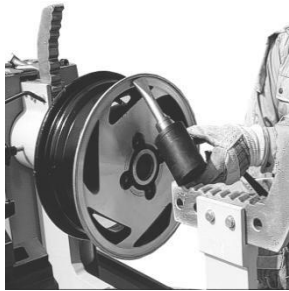
1. first the flanch is set in motion.
2. The region of the damaged magnetic gauge - be identified and marked.

RIM STRAIGHTENING POSITIONS

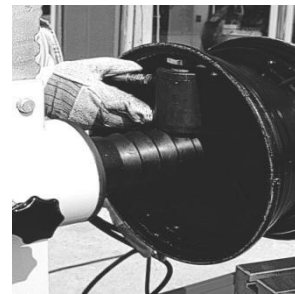




- When damage occurs outside to inside



- The damage from the inside to out side



- Defective region, to the outside, on the front side of the rim.

***** During the correction process of hair rims (excluding pressing), the settings are made with manual lever.**

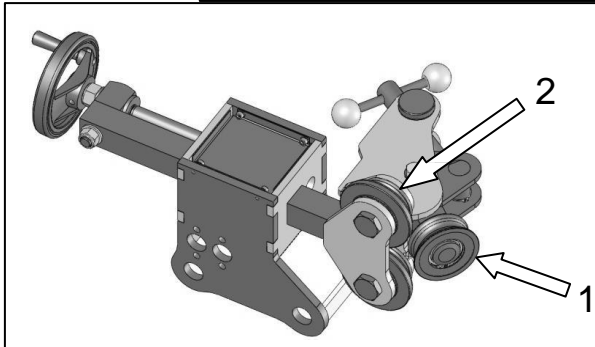
***** Before making an adjustment to the rim, the area which should be pressed, must be heated with blowtorch (especially aluminum wheels).**

This is for ;

1. To prevent breakage and cracking of wheels,
2. Interoperability of the piston without delay
3. It is for your safety.

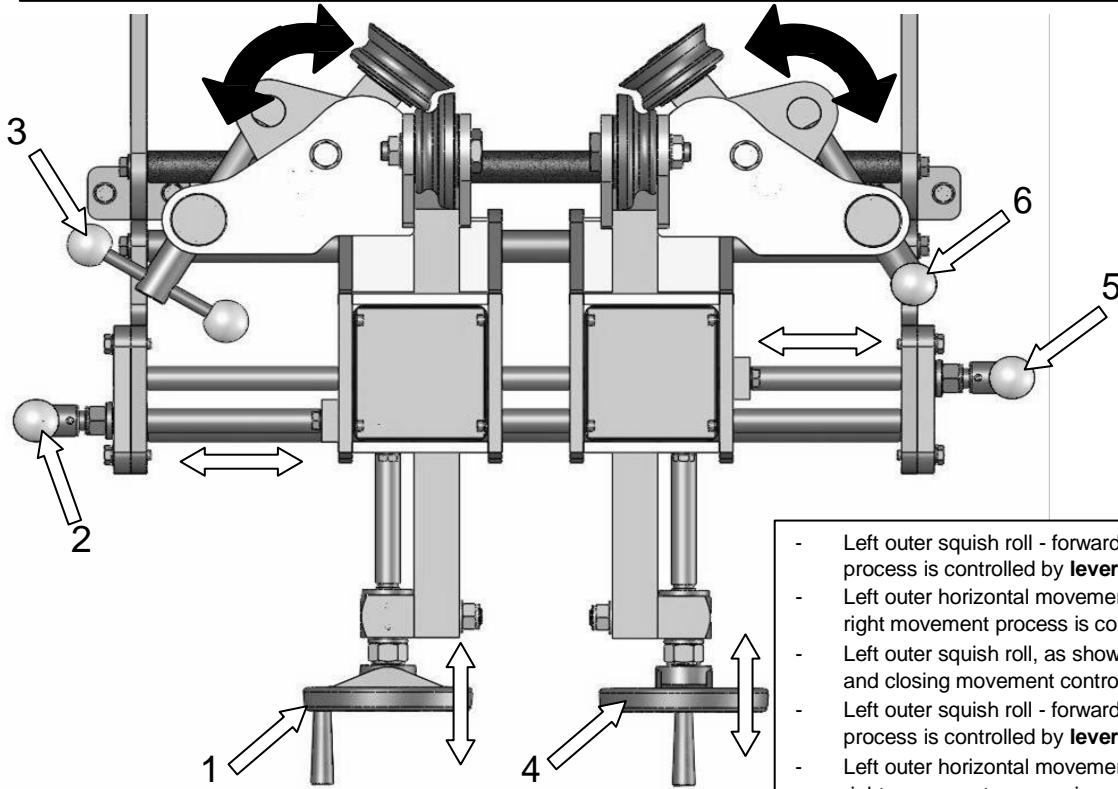
***** Very damaged wheels, should be corrected with a crowbar at first, and then be pressed with the team is leaning.**

WHEEL ADJUSTMENT PROCEDURE WITH SQUASHED



Motion Car Horizontal:

- 1- **Squish pulley of the inside** makes the press process on the inside of the rim, and makes the squish-process.
- 2- **Squish pulley of the out side** makes the press process on the out side of the rim, and makes the squish process.



- Left outer squish roll - forward, backward, movement process is controlled by **lever nr.1**.
- Left outer horizontal movement of the carriage - left right movement process is controlled by **lever nr.2**.
- Left outer squish roll, as shown, makes the opening and closing movement control, by **lever nr.3**.
- Left outer squish roll - forward, backward, movement process is controlled by **lever nr.4**.
- Left outer horizontal movement of the carriage - left right movement process is controlled by **lever nr.5**.
- Right in side squish roll, as shown, makes the opening and closing movement control, by **lever nr.6**.

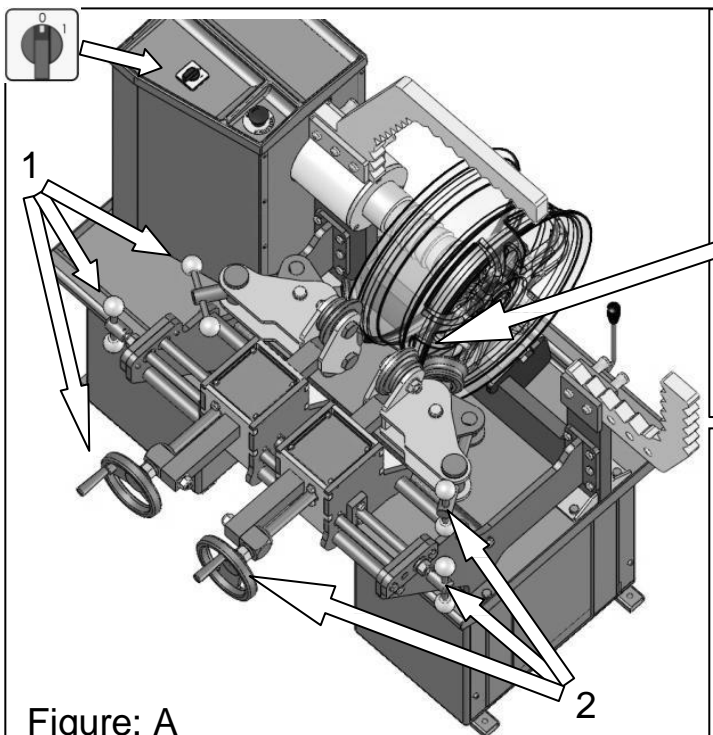


Figure: A

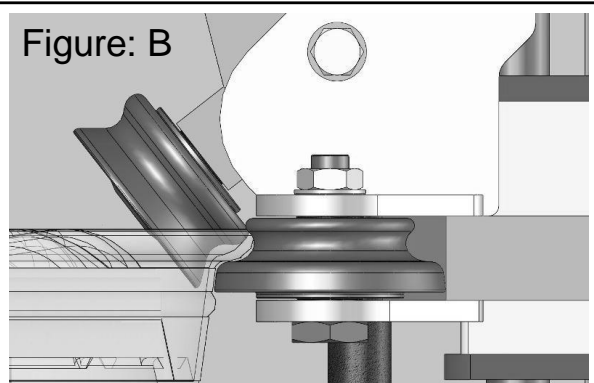
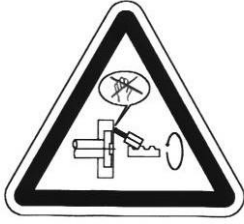


Figure: B

Improvement process with squashing:

- (Figure: A) 1 and 2 arm as shown, using the squashed of the roller, make the rim position like, adjust the details as shown in the picture. (Fig. B)
- After setting the required position at the top of the machine, turn off the switch and turn the wheel.
- At this stage, the squashed rollers, applying pressure to the entire surface of the rim, correction will be complete.

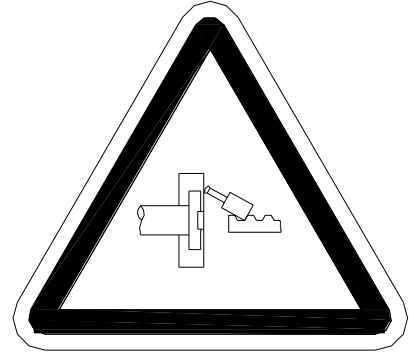
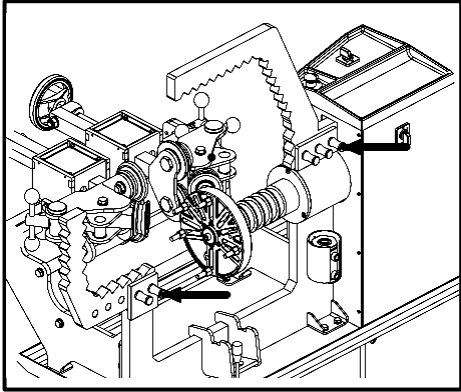
SAFETY PRECAUTIONS



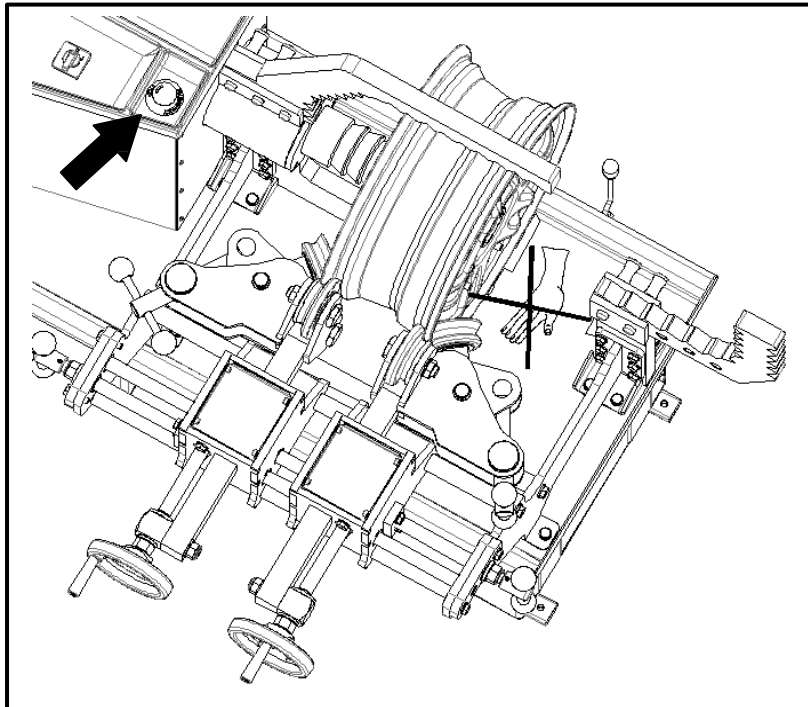
- DURING OPERATION DO NOT PLUG HAND BETWEEN FLANGES AND PISTONS.



- THE PISTON NOT HOLD ON LIVING THINGS.



- GAUGE PINS, WELL MAKE SURE IS INSTALLED, AND THE PISTON TO GAUGE CHANNEL, WELL MAKE SURE THAT IT IS VERY GOOD PLACED - FIXED.



During the process of squashing, do not plug hand between the squashed and wheels.
During the study, in any emergency situation, to stop the machine, press the button, as shown in the figure.

- KEEP THE MACHINE AWAY FROM WATER, HUMIDITY, STEAM AND CHEMICALS.
- MAINTENANCE OR CLEANING BEFORE YOU SWITCH OFF OR PULL THE PLUG.

ROUTINE MAINTENANCE

To maintain-keep the guarantee for machines, you have to use properly, and must be cleaned. Routine maintenance by the user, should be done according to the manufacturer's instructions. ** Before you begin the process of cleaning or maintenance, switch off and unplug the appliance.

DAILY..

Clean and oiling the flange and turn.

EVERY MONTH..

Check the oil level in the hydraulic system. Turning the unit and tighten the bolts.

EVERY 6 MONTH..

Oiling the bearings. Make a general maintenance.

EVERY YEAR..

General Inspection: Be sure that there is no abnormality in the mechanism and in parts of the machine is.

Electrical Assembly: Experienced electricians must test the machine.

STORAGE

DURING MACHINE NOT WORKING	WHEN IT IS LONG TIME NOT WORKING
Pull the plug on the machine when not in use.	When you not using the unit for a long time, please keep cables separate from the main switch.

TECHNICAL SERVICE AND SPARE PARTS

- MACHINE IS 1 YEAR GUARANTEED ;
- IF ANY MACHINE IS DAMAGED - CHECK MANUAL "PROBLEMS - CAUSES - REMEDIES"
- IF YOU HAVE ENCOUNTER WITH ANY INCOMPREHENSIBLE SITUATION - YOU CAN CALL OUR FACTORY SERVICE. FOR QUICK RESPONSE, CALL, AND TELL THE MODEL OF MACHINE - PRODUCTION NUMBER, NUMBER OF MACHINE.

WARNING

HYDRAULIC, ELECTRIC OR PNEUMATIC A STUDY IN THE SYSTEM SHOULD ONLY BE DONE BY A **PROFESSIONAL PEOPLE**.

- ELECTRIC MOTOR IS NOT GUARANTEED.



THERE IS NO HYDRAULIC UNIT OIL.

There is no oil in the hydraulic unit of the machine. Oil tank, you'll find oil in the accessory box, fill up to display, with oil .

- Use only SHELL TELLUS 46, or use OIL OFFICE HD 46.
- In winter, warm up your machine 10 minutes run idle. Then start working.

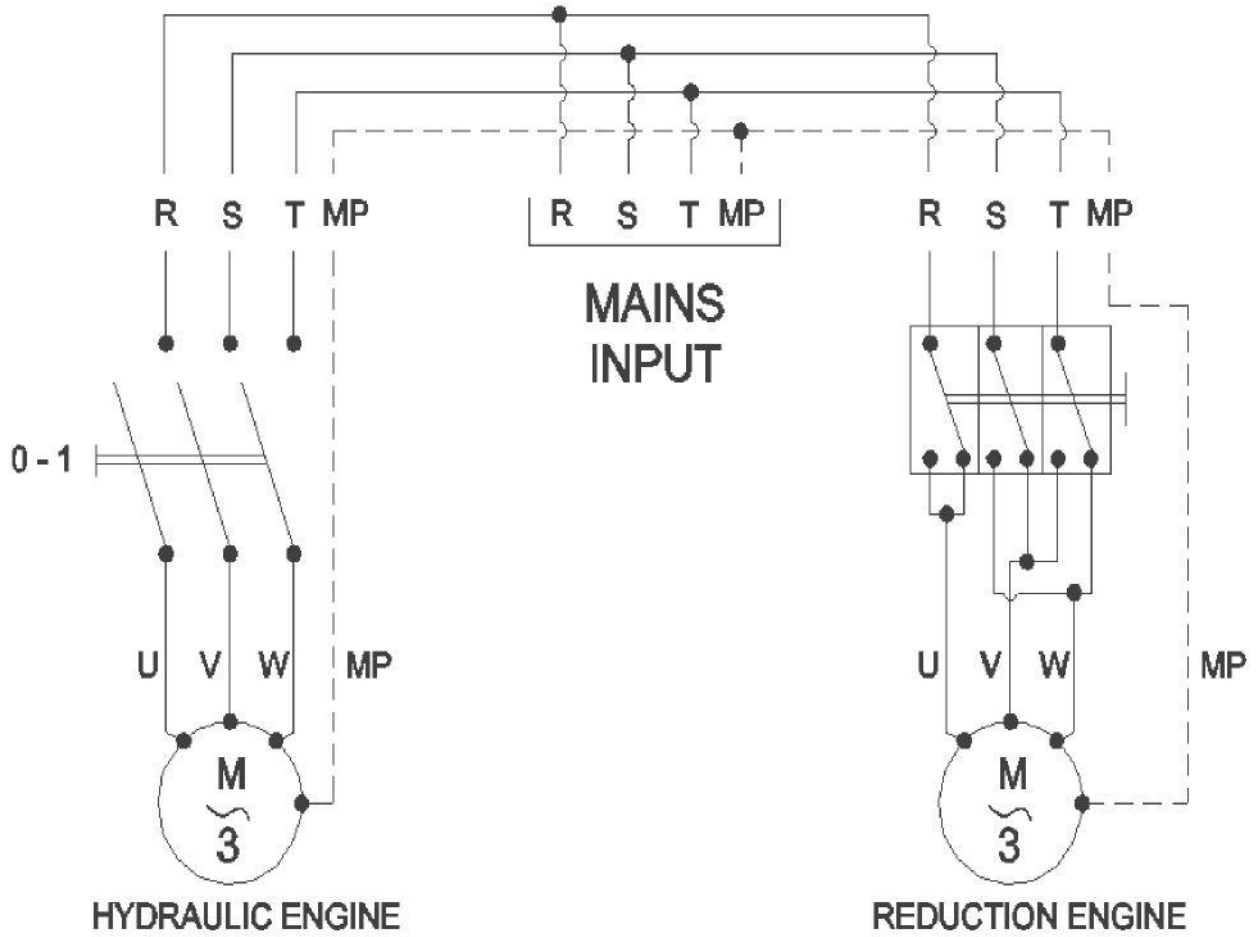
WARNING

FOR THIS MACHINE SHOULD BE USED ONLY ORIGINAL PARTS

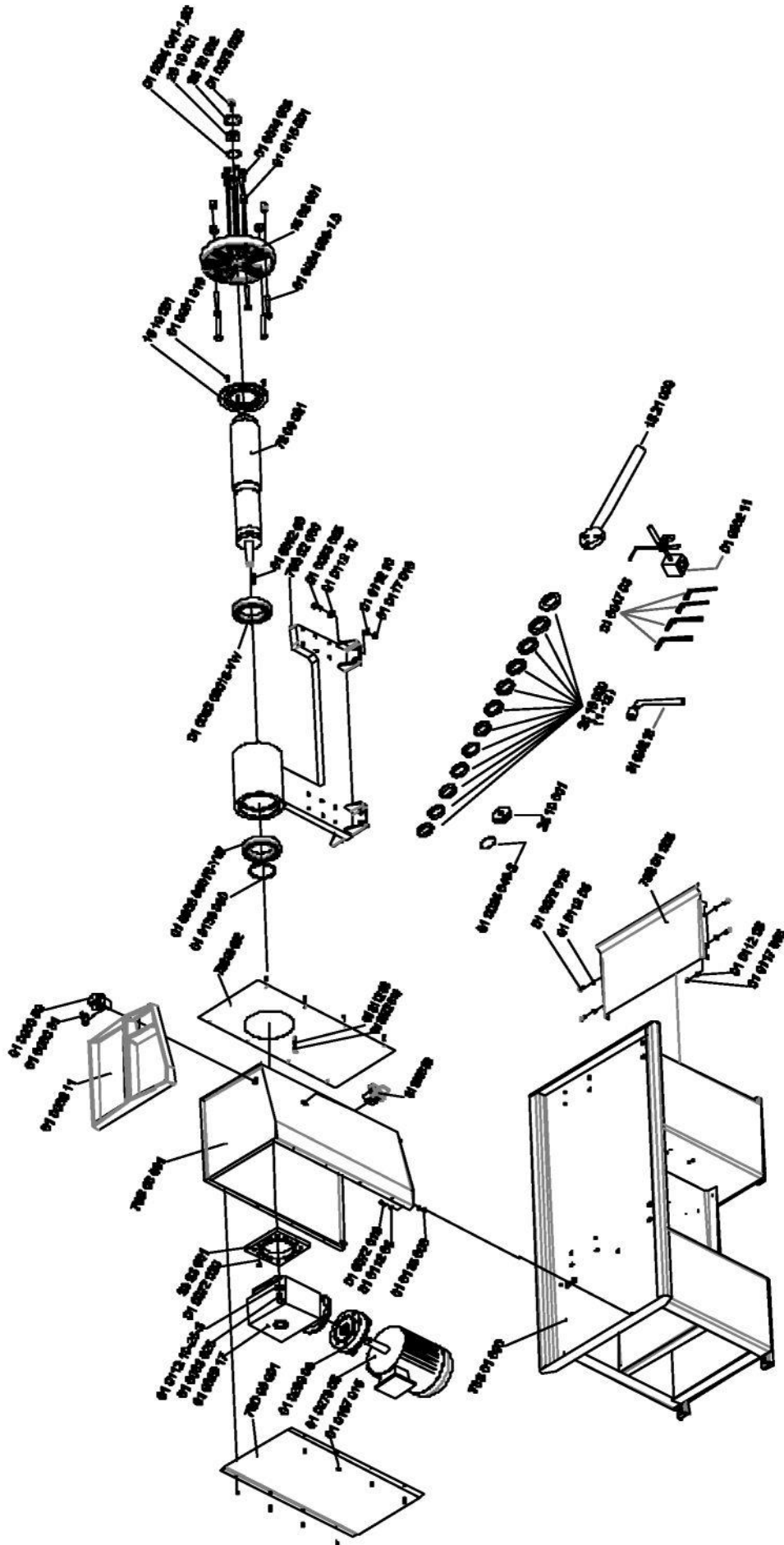
TO GIVE SPARE PARTS ORDER:

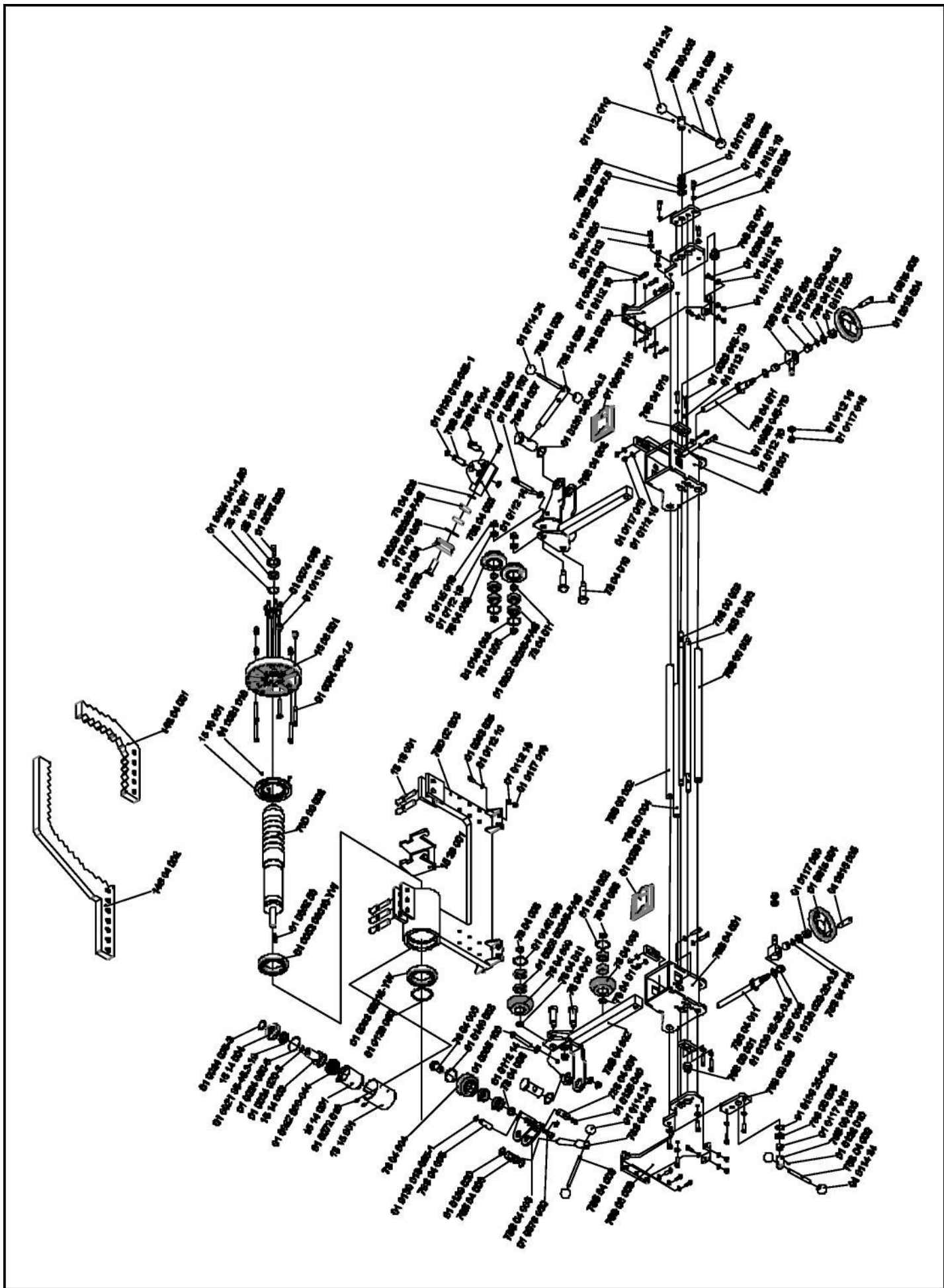
- DECLARE MACHINE SERIAL NUMBER AND PRODUCTION YEAR
- DECLARE DESIRED TRACK CODE
- DECLARE AMOUNT REQUESTED

ELECTRICAL PLAN



ROLLER DEMONTAGE PLAN





ROLLER - PART LIST		
NR.	PART / CODE NR.	NAME OF PART
1	78D 00 001	COVER OF MOTOR PROTECTION
2	78D 00 002	SPINDLE
3	78S 01 000	BOTTOM BODY GROUP
4	78S 01 008	SIDE SHELF
5	78D 02 000	UPPER BODY GROUP
6	78D 03 000	GROUP OF MOTOR CABIN
7	78S 00 001	HORIZONTAL MOVEMENT BEARING
8	78S 00 002	SLIDE SHAFT
9	78S 00 003	HORIZONTAL STUD PLAY
10	78S 00 004	SUPPORT SHAFT
11	78S 00 005	CONNECTING ROD BUSH WHEEL M18
12	78S 00 008	SPECIAL WASHER M18
13	78S 00 009	SHAFT CONNECTION LAMAI
14	78S 03 000	CONNECTION OF MOTOR GROUP
15	78S 04 000	CAR LEFT HORIZONTAL MOVEMENT GROUP
16	78S 04 001	CAR BODY LEFT HORIZONTAL MOVEMENT GROUP
17	78S 04 002	REEL ACTION GROUP HOUSING
18	78S 04 003	THE REEL HOUSING GROUP INTERNAL SQUASHED
19	78S 04 004	INTERIOR OF SQUASHED PULLEY BOLT SET
20	78S 04 005	DISTANCE TO BUSH SETTING
21	78S 04 006	INTERIOR OF SQUASHED BUSH RETURN ROLLERS
22	78S 04 007	THE NUT SQUASHED PROOF INSIDE REEL
23	78S 04 008	INTERIOR OF SQUASHED PROOF REEL SHAFT
24	78S 04 009	HANDLE LEVER
25	78S 04 010	BOLT ACTION SYSTEM
26	78S 04 011	NAVIGATION SYSTEMS GROUP
27	78S 04 012	STEERING SHAFT CONNECTION LAMAI
28	01 0039 116	MOTION CAR COVER
29	78S 04 015	M20 WASHER SPECIAL
30	78 04 004	INTERIOR OF SQUASHED REEL
31	78 04 005	REEL SHORT SHAFT CONNECTION
32	78 04 006	DISTANCE LEFT PULLEY WASHER
33	78 04 009	FOREIGN SQUASHED THE REEL
34	78 04 010	LONG ROLLER SHAFT CONNECTION
35	78 04 011	REEL RIGHT DISTANCE WASHER
36	01 0315 005	HANDLE LEVER
37	01 0315 004	WHEELS
38	01 0140 058	SEGMAN RING
39	01 0139 030	RING
40	01 0130 25-36-0.5	WASHER
41	01 0130 040-50-0.5	WASHER
42	01 0130 020-28-0.5	WASHER
43	01 0130 018-025-1	WASHER
44	01 0125 040	SCREW
45	01 0117 020	NUT
46	01 0117 016	NUT
47	01 0117 014	NUT
48	01 0117 010	NUT
49	01 0115 018	NUT
50	01 0114 24	KNOB
51	01 0112 18	WASHER
52	01 0112 16	WASHER
53	01 0112 14	WASHER
54	01 0112 10	WASHER
55	01 0112 06	WASHER
56	01 0076 050	CIVATA BOLT
57	01 0072 010	BOLT
58	01 0065 100	BOLT
59	01 0063 045-YD	BOLT
60	01 0053 06205-FAG	BEARING
61	01 0027 006	THERMO COVER FOR REDUCING BUSH OIL
62	78S 05 000	CAR RIGHT HORIZONTAL MOVEMENT GROUP
63	78S 05 001	CAR BODY RIGHT HORIZONTAL MOVEMENT GROUP
64	15 15 000	GROUP OF HANGER PISTON
65	01 0115 008	NUT
66	01 0062 030	BOLT

ROLLER - PART LIST		
NR.	PART / CODE NR.	NAME OF PART
67	01 0063 035	BOLT
68	01 0112 08	WASHER
69	01 0072 010	BOLT
70	01 0073 050	BOLT
71	15 32 001	HYDRAULIC MOTOR PROTECTION COVER
72	15 32 000	GROUP OF HYDRAULIC UNIT
73	15 13 001	GAUGE FIXING PIN
74	14S 04 001	DOWN GAUGE
75	15 39 000	BELOW PISTON HANGER
76	14S 04 002	UPPER GAUGE
77	15 14 000	GROUP OF FIX PISTON
78	01 0115 001	WHEEL NUT
79	01 0064 080-1.5	BOLT
80	01 0075 030	BOLT
81	26 10 001	FIXED HUB FLANGE
82	01 0039 11	UPPER COVER
83	01 0030 31	ADDITIONAL CONTACTS
84	01 0030 50	EMERGENCY - STOP BUTTON
85	01 0115 006	NUT
86	01 0074 035	BOLT
87	15 08 001	FLANGE
88	01 0072 016	BOLT
89	01 0112 06	WASHER
90	01 0081 016	BOLT
91	15 10 001	BEARING HOUSING FRONT COVER
92	01 0107 015	SHEET METAL SCREW
93	01 0200 05	SWITCH
94	01 0130 25-36-0.5	RAYNEL PUL
95	01 0269 08	FLANGE
96	01 0273 05	MOTOR
97	01 0112 10-25-3	WASHER
98	01 0029 17	REDUCTOR
99	01 0072 020	BOLT
100	23 23 001	REDUCTOR CONNECTION FLANGE
101	01 0139 080	RING
102	01 0052 50	WEDGE
103	01 0053 06016-YW	RULMAN
104	01 0114 24	KNOB
105	78S 04 009	HANDLE LEVER
106	01 0064 035	BOLT
107	01 0112 12	WASHER
108	01 0063 025	BOLT
109	01 0117 010	NUT
110	01 0063 030	BOLT
111	01 0112 10	WASHER
112	01 0117 018	NUT
113	01 0122 010	SCREW
114	15 21 000	ADJUSTMENT LEVER
115	01 0052 11	MAGNETIC LINEAR HEIGHT GAGES
116	01 0047 03	ALLEN KEY SET
117	01 0024 020-3	O-RING
118	15 61 003A	LONG CONNECTION KIT
119	15 61 003B	SHORT CONNECTION KIT
120	15 61 002A	SHAFT OF GAUGE 65 mm
121	15 61 002B	SHAFT OF GAUGE 90 mm
122	15 61 002C	SHAFT OF GAUGE 115 mm
123	15 61 002D	SHAFT OF GAUGE 140 mm
124	15 61 002E	SHAFT OF GAUGE 165 mm
125	15 61 001A	ANGLE GAUGE
126	15 61 001B	SQUARE GAUGE SMALL
127	15 61 001C	STEPPED GAUGE
128	15 61 001D	GAUGE - SIDE CUTTER
129	15 61 001E	SQUERE GAUGE - BIG
130	15 61 001F	SQUERE GAUGE REVERSE
131	26 10 054.0	CENTERING WHEEL HUB FLANGE - Ø54
132	26 10 056.5	CENTERING WHEEL HUB FLANGE - Ø 56.5

ROLLER - PART LIST		
NR.	PART / CODE NR.	NAME OF PART
133	26 10 057.0	CENTERING WHEEL HUB FLANGE - Ø 57
134	26 10 058.0	CENTERING WHEEL HUB FLANGE - Ø 58
135	26 10 059.5	CENTERING WHEEL HUB FLANGE - Ø 59.5
136	26 10 060.1	CENTERING WHEEL HUB FLANGE - Ø 60.1
137	26 10 063.3	CENTERING WHEEL HUB FLANGE - Ø 63.3
138	26 10 064.0	CENTERING WHEEL HUB FLANGE - Ø 64
139	26 10 065.0	CENTERING WHEEL HUB FLANGE - Ø 65
140	26 10 066.6	CENTERING WHEEL HUB FLANGE - Ø 66.6
141	26 10 072.0	CENTERING WHEEL HUB FLANGE - Ø 72
142	26 10 072.5	CENTERING WHEEL HUB FLANGE - Ø 72.5
143	53 01 013	MILE CONNECTION WASHER



EU Declaration of Conformity

in accordance with directives : 2006/42/EU, 2014/35/EU, 2014/30/EU

We: **Uni-Trol Co. Ltd.**
Ul. Estrady 56
01-932 Warsaw
Poland

declare, under our exclusive responsibility, that the product

WHEEL RIM STRAIGHTENING MACHINE

Electromechanical and hydraulic device

Model ROLLER

serial number.....

concerned by this declaration, complies with all relevant requirements of the Machinery Directive:

- **Directive 2006/42/EU (safety machines),**

applicable in the essential requirements and relevant conformity assessment procedures, as well as on the essential requirements of the following directives:

- **Directive 2014/35/EU (the low voltage);**

- **Directive 2014/30/EU (the electromagnetic compatibility).**

For verification of conformity with the provisions of law were consulted the harmonized standards or other norms documents :

PN-EN ISO 12100:2012P

Safety of machinery. Basic concepts, general principles for design. Part 1: Basic terminology, methodology

PN-EN 61000-6-3:2008P

Electromagnetic compatibility (EMC). Part 6-3: Generic standards. Emission standard for residential, commercial and light industrial (org.)

PN-EN 61000-6-4:2008P

Electromagnetic compatibility (EMC). Part 6-4: Generic standards. Emission standard for industrial environments (org.)

PN-EN ISO 13857:2010P

Safety of machinery. Safety distances to prevent reaching the upper limbs and lower the danger zones (org.)

PN-EN 349+A1:2010P

Safety of machinery. Minimum gaps to avoid crushing of parts of human body (org.)

PN-EN 60204-1:2010P

Safety of machinery. Electrical equipment of machines. Part 1: General requirements (org.)

PN-EN 61293:2000P

Marking of electrical equipment with ratings related to electrical supply - Safety requirements;

PN-EN ISO 4413:2011E

Hydraulic drives and controls - General rules and safety requirements for systems and their components

PN-EN ISO 11201:2012P

Acoustics - Noise emitted by machinery and equipment - Determination of emission sound pressure levels at a work station and at other specified positions in an essentially free field over a reflecting plane with negligible environmental corrections

PN-EN ISO 11202:2012P

Acoustics - Noise emitted by machinery and equipment - Determination of emission sound pressure levels at a work station and at other specified positions applying approximate environmental corrections

PN-EN ISO 4871:2012P

Acoustics - Declaration and verification of noise emission values of machinery and equipment

PN-EN 50419:2008P

The technical documentation mentioned product, as specified in Annex VII A, point 1 of the Machinery Directive, is located in the headquarters Uni-trol Ltd. (address as above) and will be made available to the competent national authorities for at least ten years from the date of the last piece.

The person responsible for the preparation of the technical documentation of the product and introducing changes in it, is MSc. Gregory Tworek - Member of the Board.

This EC Declaration of Conformity will be kept by the manufacturer of the product for 10 years from the date of produce the last unit and will available for market supervisory authorities for verification.

MSc. Gregory Tworek - Member of the Board.

Warsaw, 15.10.2019

.....
Signature