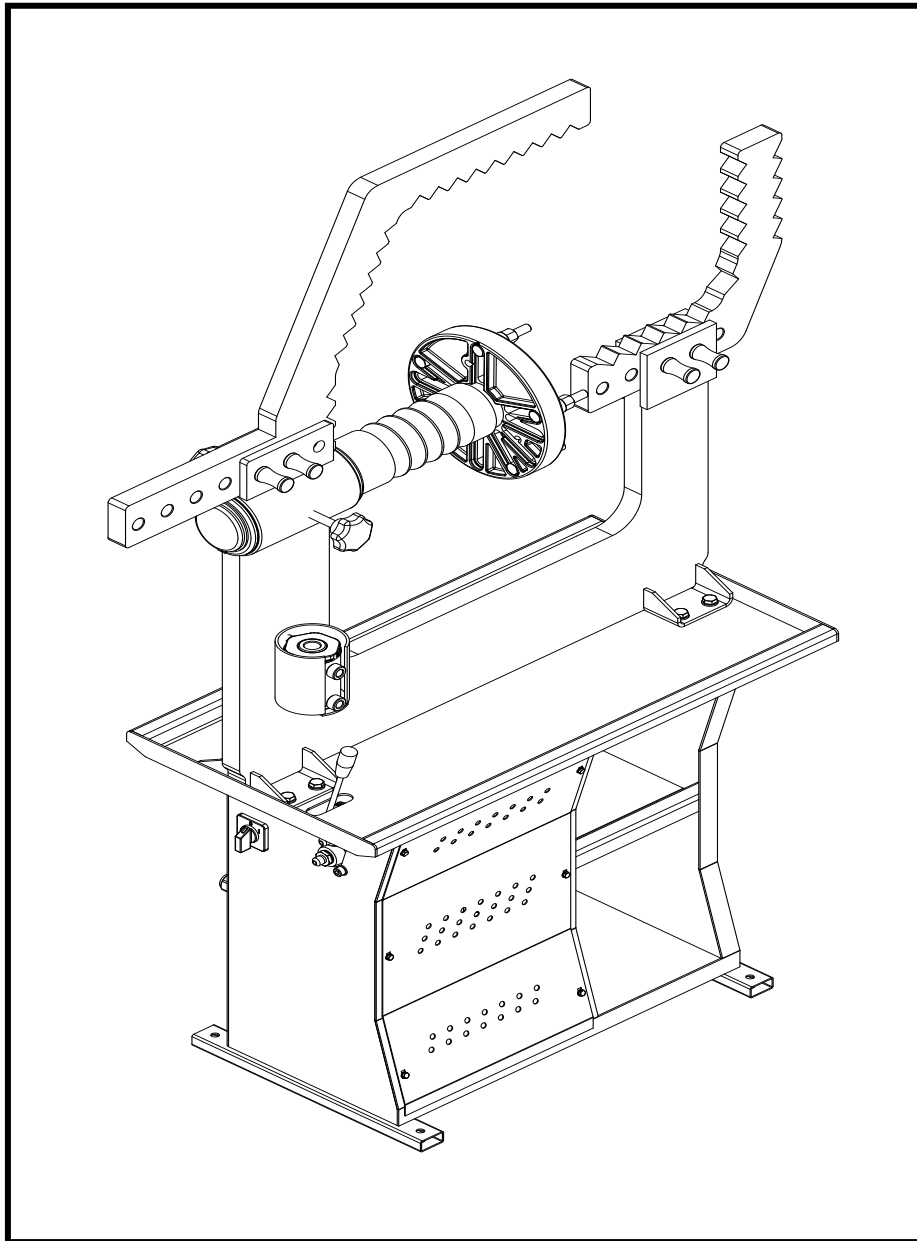




*English*

# INSTRUCTIONS BOOKLET



## ***RIM PRESS***

**PO-14 S**



# WARRANTY CERTIFICATE

The machines which are produced by Uni-trol Co. Ltd. are under warranty against defects of the material and production for one(1) Year from date of it is sold.

Our company Uni-trol Co. Ltd. is not responsible for the damages or defects due to damages occurred by faulty used and out of purpose of use.

If the defects and damages are occurred during the warranty, after making analysis by technical staff, If the material and production fault is found, the damaged parts will be replaced with new one

Warranty covers all parts of the machine during the warranty.

**ATTENTION:** you have to put thermic switch which is suitable to motor ampere on your electric wiring to make electric motor under warranty otherwise in case of any defect the electric motor will not be under warranty.

Do make maintenance of the machine periodically, monthly, yearly, the defects, damages which are caused by not making maintenance will not be under warranty.

**Sale Date**        :

**Seller Company:**

## IMPORTANT NOTICE

- The presents instructions booklet is an integral part of the product. Carefully study the warnings and instructions contained in it. This information is important for safe use and maintenance.
- Conserve this booklet carefully for further consultation.

### **THIS MACHINE**

Is a rim pres to repair defective rims.

The machine has been designed to operate within the limits described in this booklet and in accordance with the manufacturers instructions.

The machine must be used only for the functions for which it was expressly designed. Any other use is considered wrong and therefore unacceptable.

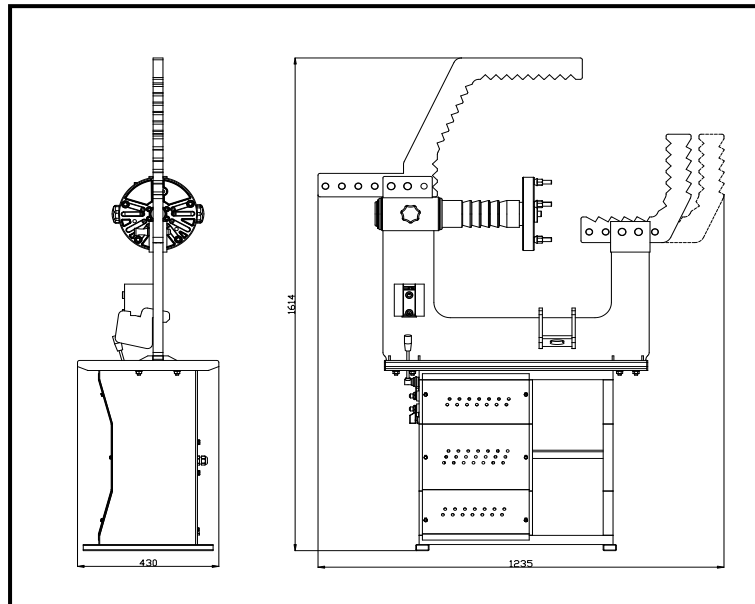
The manufacturers cannot be held responsible for eventual damage casued by improper , erroneous or unacceptable use.

## IMPORTANT

This machine may be operated only by suitably trained personnel. Any work on the electrical , hydraulic systems must be conducted only by professionally qualified personnel.

## TECHNICAL CHARACTERISTICS

### TECHNICAL DATA



HEIGHT	1614 mm
LENGTH	1235 mm
WIDHT	430 mm
RIM	10" – 24"
NET WEIGHT	165 kg
NOISE LEVEL	75 db
HYDRAULIC UNIT ENGINE	0.55 kw – 1400 rpm 3 Phases – Single phase 230 – 400 V

# **UNI -TROL®**

MANUFACTURING PLANT & STORE

UNI - TROL Co. Ltd.

ul . Estrady 56 , 01 - 932 Warsaw , Poland

## INTRODUCTION

### WARNING

**THIS MANUAL HAS BEEN PREPARED FOR WORKSHOP PERSONNEL EXPERT IN THE USE OF THE MACHINE (OPERATOR) AND TECHNICIANS RESPONSIBLE FOR ROUTINE MAINTENANCE (MAINTENANCE FITTER); READ THE MANUAL BEFORE CARRYING OUT ANY OPERATION WITH THE RIM REPAIR AND/OR PACKING . THIS MANUAL CONTAINS IMPORTANT INFORMATION REGARDING :**

- RIM REPAIR MACHINES SAFETY
- THE PERSONNEL SAFETY OF OPERATORS AND MAINTENANCE WORKERS

## CONSERVING THE MANUAL

THE MANUAL IS AN INTEGRAL PART OF THE RIM REPAIR, WHICH IT SHOULD ALWAYS ACCOMPANY EVEN IF THE UNIT IS SOLD.

THE MANUAL MUST BE KEPT IN PROXIMITY OF THE RIM REPAIR, IN AN EASILY ACCESSIBLE PLACE.

THE OPERATOR AND MAINTENANCE STAFF MUST BE ABLE TO LOCATE AND CONSULT THE MANUAL QUICKLY AND AT ANY TIME.

LIFTING, TRANSPORT , UNPACKING , ASSEMBLY , STARTING UP , INITIAL ADJUSTMENT AND TESTING , EXTRAORDINARY MAINTENANCE , REPAIR , OVERHAULS, TRANSPORT AND DISMANTLING OF THE RIM REPAIR MACHINE MUST BE PERFORMED BY SPECIALISED PERSONNEL FROM THE LICENSED DEALER OR A SERVICE CENTRE AUTHORISED BY THE MANUFACTURER .

THE MANUFACTURER DECLINES ALL RESPONSIBILITY FOR INJURY TO PERSONS OR DAMAGE TO VEHICLES OR OBJECTS WHEN ANY OF THE ABOVE MENTIONED OPERATIONS HAS BEEN PERFORMED BY UNAUTHORISED PERSONNEL OR WHEN THE RIM REPAIR HAS BEEN SUBJECT TO IMPROPER USE.

THIS MANUAL INDICATES ONLY THE OPERATIVE AND SAFETY ASPECTS THAT MAY PROVE USEFUL TO THE OPERATOR AND MAINTENANCE WORKER, IN BETTER UNDERSTANDING THE STRUCTURE AND OPERATION OF THE RIM REPAIR AND FOR BEST USE OF THE SAME.

IN ORDER TO UNDERSTAND THE TERMINOLOGY USED IN THIS MANUAL, THE OPERATOR MUST HAVE SPECIFIC EXPERIENCE IN WORKSHOP, SERVICE, MAINTENANCE AND REPAIR ACTIVITIES.

## PACKING , TRANSPORT , STORAGE

ALL PACKING,LIFTING , HANDLING , TRANSPORT AND UNPACKING OPERATIONS ARE TO BE PERFORMED EXCLUSIVELY BY EXPERT PERSONNEL WITH KNOWLEDGE OF THE RIM PRES AND THE CONTENTS OF THIS MANUAL.

### PACKING

**THE RIM REPAIR MACHINE IS SENT ON PALLETS, COVERED WITH STRECH FILM WEIGHING APPROXIMATELY 190 KG**

### LIFTING AND HANDLING

THE PALLETS MUST BE MOVED WITH A LIFT TRUCK.THE EQUIPMENT CHOSEN MUST BE SUITABLE FOR SAFE LIFTING AND MOVING, BEARING IN MIND THE DIMENSIONS , WEIGHT , BARYCENTRE , JUSTS AND FRAGILE PARTS NOT TO BE DAMAGED.

#### STORAGE

PACKED MACHINERY MUST ALWAYS BE KEPT IN A COVERED , PROTECTED PLACE AT A TEMPERATURE BETWEEN -10 °C TO +40 °C AND MUST NOT BE EXPOSED TO DIRECT SUNLIGHT.

#### PACKAGES STACKING

THE TYPE OF PACKING ALLOWS THE POSSIBILITY OF STACKING UP TO 2 PACKAGES, PROVIDED THEY ARE RESTRAINED TO PREVENT FALLING.

UP TO 2 PALLETS MAY BE STACKED ONE UPON THE OTHER ON LORRIES OR IN CONTAINERS IF PROPERLY POSITIONED AND PROVIDED THEY ARE RESTRAINED TO PREVENT FALLING.

#### OPENING CRATES

WHEN THE CRATES ARRIVE, CHECK THAT THE MACHINE HAS NOT BEEN DAMAGED DURING TRANSPORT AND THAT ALL THE LISTED PARTS ARE PRESENT. THE CRATES MUST BE OPENED USING ALL POSSIBLE PRECAUTIONARY MEASURES TO AVOID DAMAGING THE MACHINE OR ITS PARTS. MAKE SURE THAT PARTS DO NOT FALL FROM THE CRATE DURING OPENING.

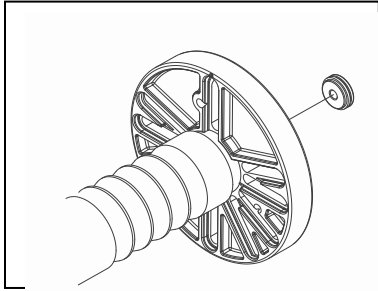
#### DISPOSAL OF CRATES

THE WOOD OF THE PALLETS AND THE STRECH FILM MAY BE RE-USED.

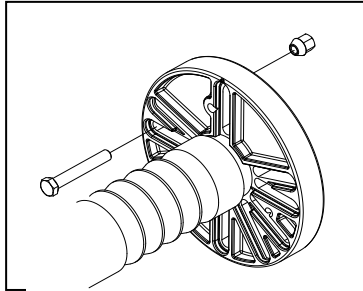
**OPERATION**

• **CONNECTING THE DEFECTIVE RIM TO THE FLANSH**

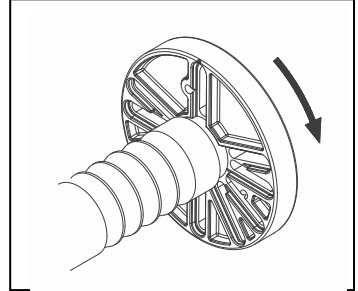
1. Clean the muds and the balance weights from the rim



2. Choose a suitable sized connecting flansh for the rim.



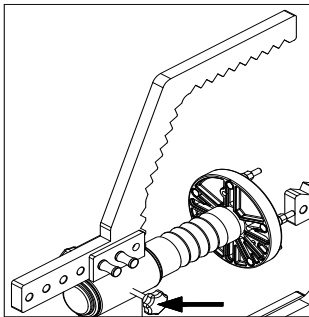
3. Tight the connecting flansh and fasten to the suitable canals on the flansh.



1. Rotate the flansh

• **ANALYSING THE DEFECTIVE AREA**

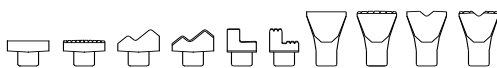
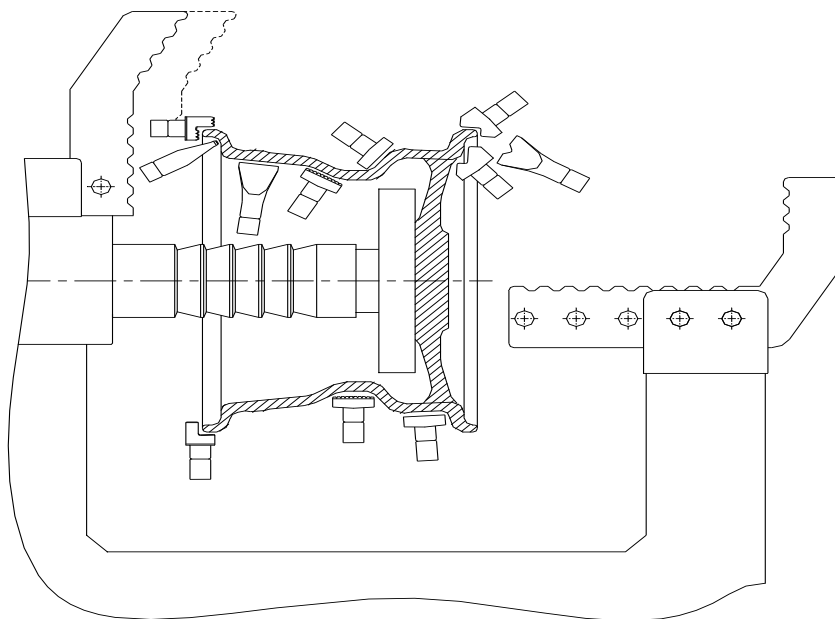
2. Locate the defective area by using gauge and sign it.



**3. \*\*\*TIGHT THE NUTS TO START THE REPAIRING PROCEDURE**

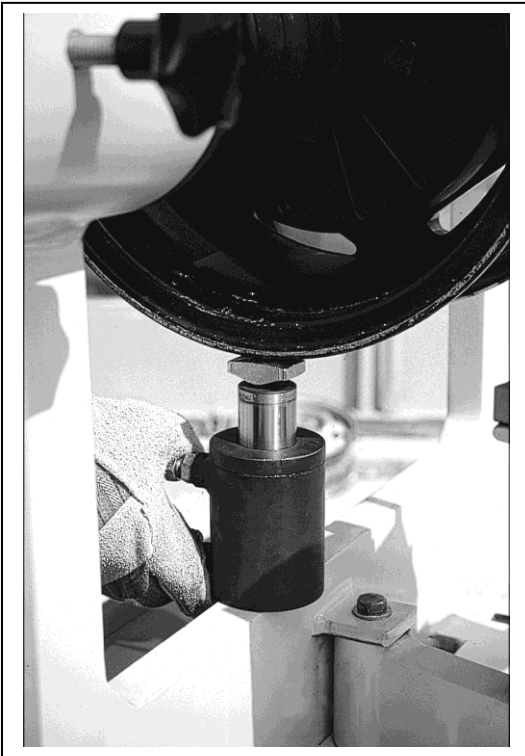
4. Choose a suitable support and repair it by using the pres.

**RIM REPAIRING POSITIONS**

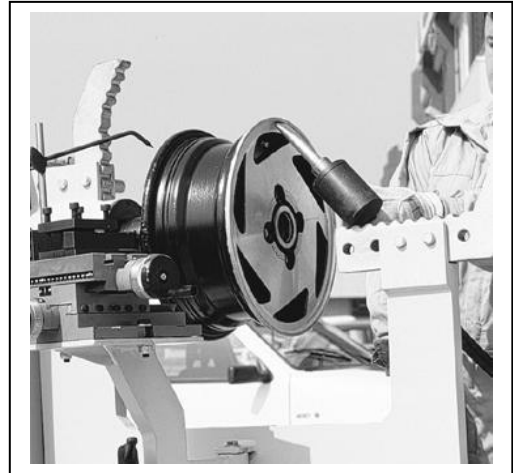


## OPERATION

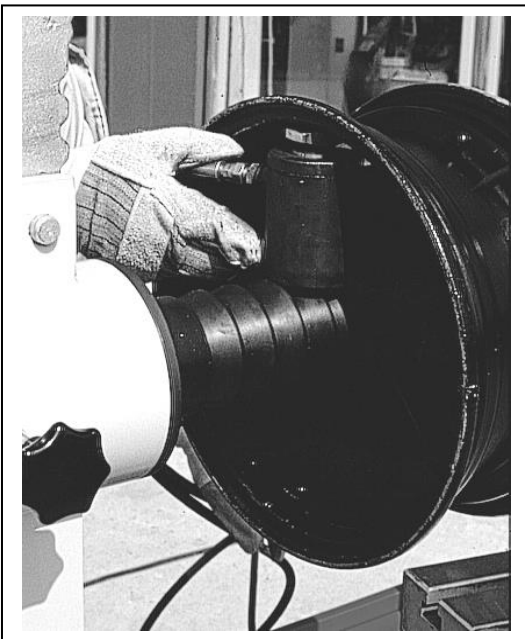
### SOME EXAMPLES OF THE REPAIR



- If the defect is from inner to the outer side of the rim



- If the defect is on the front surface to the outer side of the rim



- If the defect is from outer to the inner side of the rim.

## ROUTINE MAINTENANCE

To guarantee the efficiency of the machine and for its correct functioning is essential to carry out routine cleaning and maintenance.

Routine maintenance must be carried out by the user according to the maker's instruction.

**Before starting any cleaning or maintenance switch off the main switch and remove the mains plug from socket.**

### **EVERY DAY...**

Clean and grease the flansh.

### **EVERY MONTH...**

Check the oil level of the hydraulic system.

### **EVERY 6 MONTHS...**

Grease the bearings. make a general check.

### **EVERY YEAR...**

**General Check:** Visual inspection of all structural parts and mechanisms to guarantee that there are no problems or anomalies.

**Electric Plant:** Skilled electricians should test the electric plant.



## THERE IS NO OIL IN THE HYDRAULIC UNIT

The machine is provided without oil in the hydraulic unit. Put some oil till the level to the hydraulic unit from the oil can that you can find in your accessories box provided with your machine.

Use only SHELL TELLUS 37 in the hydraulic unit

## TECHNICAL ASSISTANCE AND SPARE PARTS

- THE MACHINE IS GUARANTEED (1 YEAR) ;
- IN ALL CASES CONTACT THE ASSISTANCE SERVICE OF HATCO. FOR PROMPT ASSISTANCE IT IS IMPORTANT AT THE TIME OF THE CALL TO SPECIFY THE MACHINE MODEL, THE PRODUCTION NO. (FOUND ON THE REGISTRATION PLATE) AND TYPE OF MALFUNCTION.

### **WARNING**

ANY WORK ON THE ELECTRICAL, HYDRAULIC AND PNEUMATIC SYSTEMS MUST BE CARRIED OUT ONLY BY **PROFESSIONALLY QUALIFIED PERSONNEL.**

\*\*\*THE MOTORS ARE NOT UNDER WARRANTY.

- WHEN REPLACING PARTS AND MAKING REPAIRS COMPLY WITH ALL THE SAFETY PRECAUTIONS.

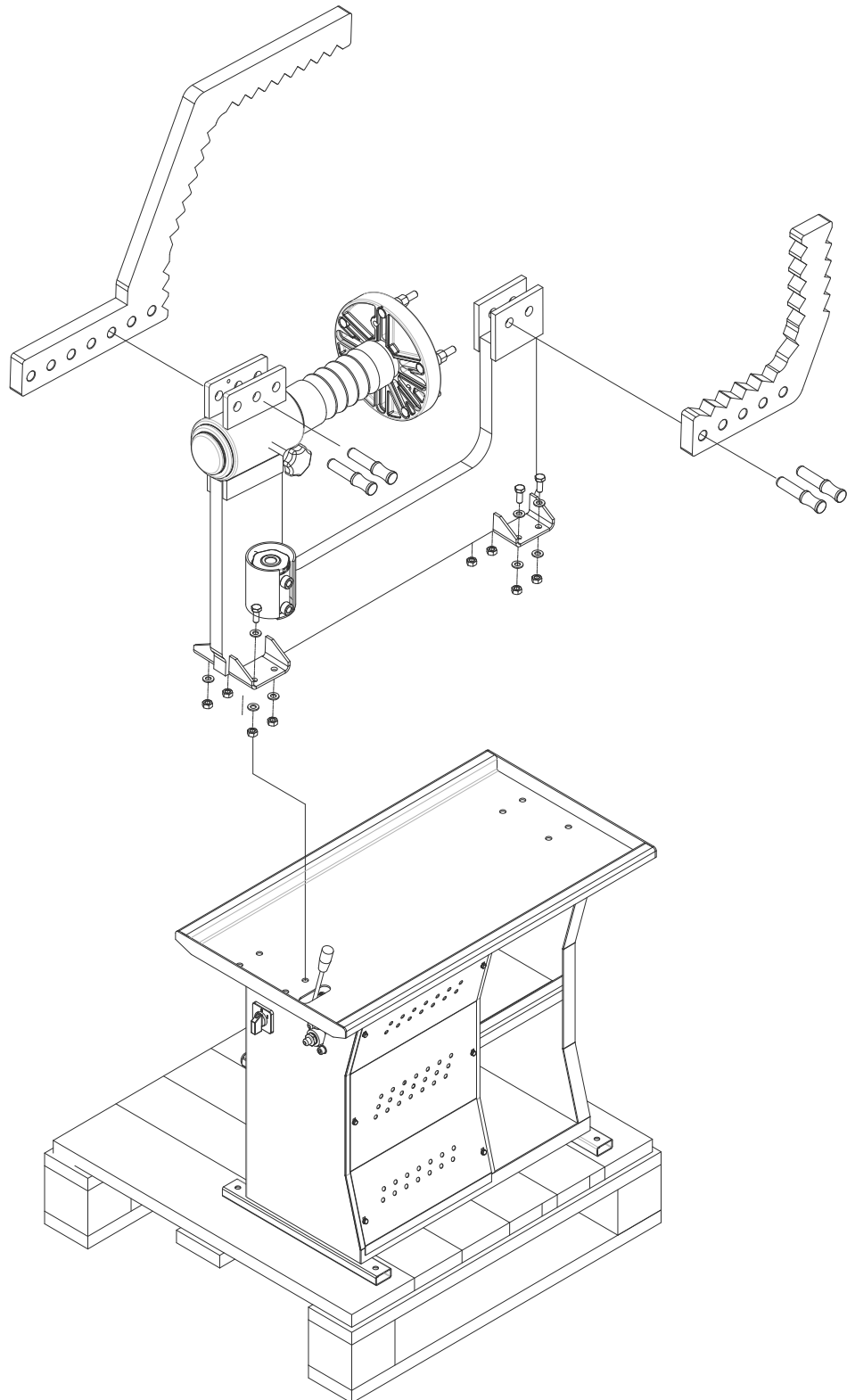
### **WARNINGS**

**USE ONLY ORIGINAL PARTS OF THIS MACHINE  
THE MANUFACTURER TAKES NO RESPONSIBILITY OF THE NONORIGINAL PARTS**

**TO ORDER SPARE PARTS:**

- INDICATE THE SERIAL NUMBER OF THE MACHINE AND THE YEAR BUILT.
- INDICATE THE CODE OF THE PIECE REQUESTED.
- INDICATE THE

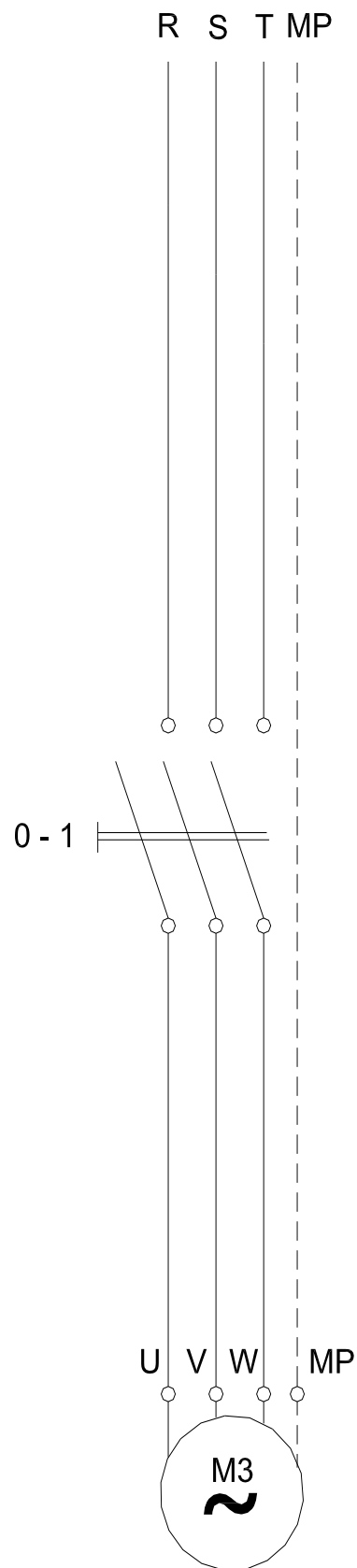
## MACHINE ASSEMBLY AND SET UP



When you open the case of the machine check the machine is there any damage or missing parts because of the transport.  
take care of the nail, wire and stamping material on the package when you disassembling the packing.

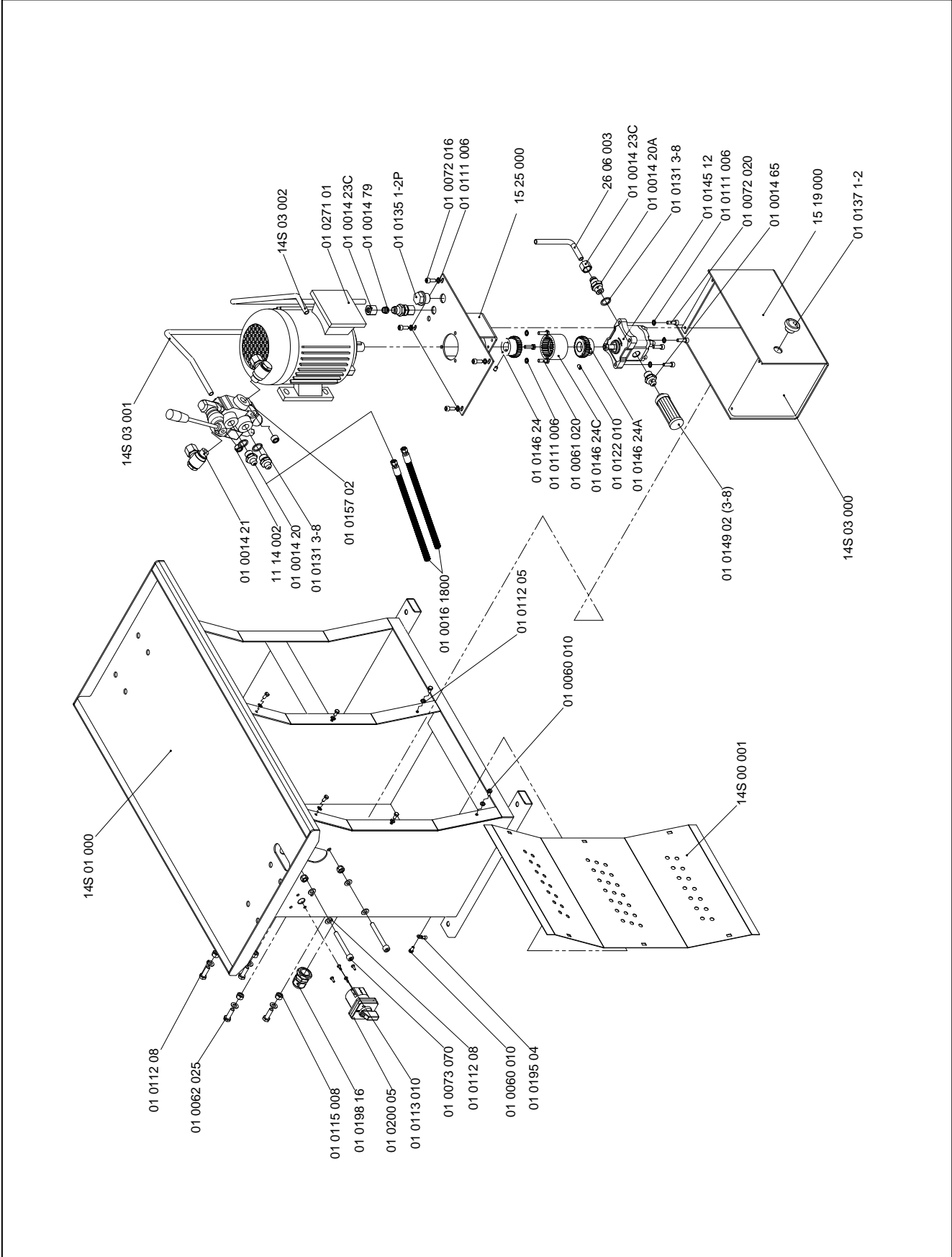


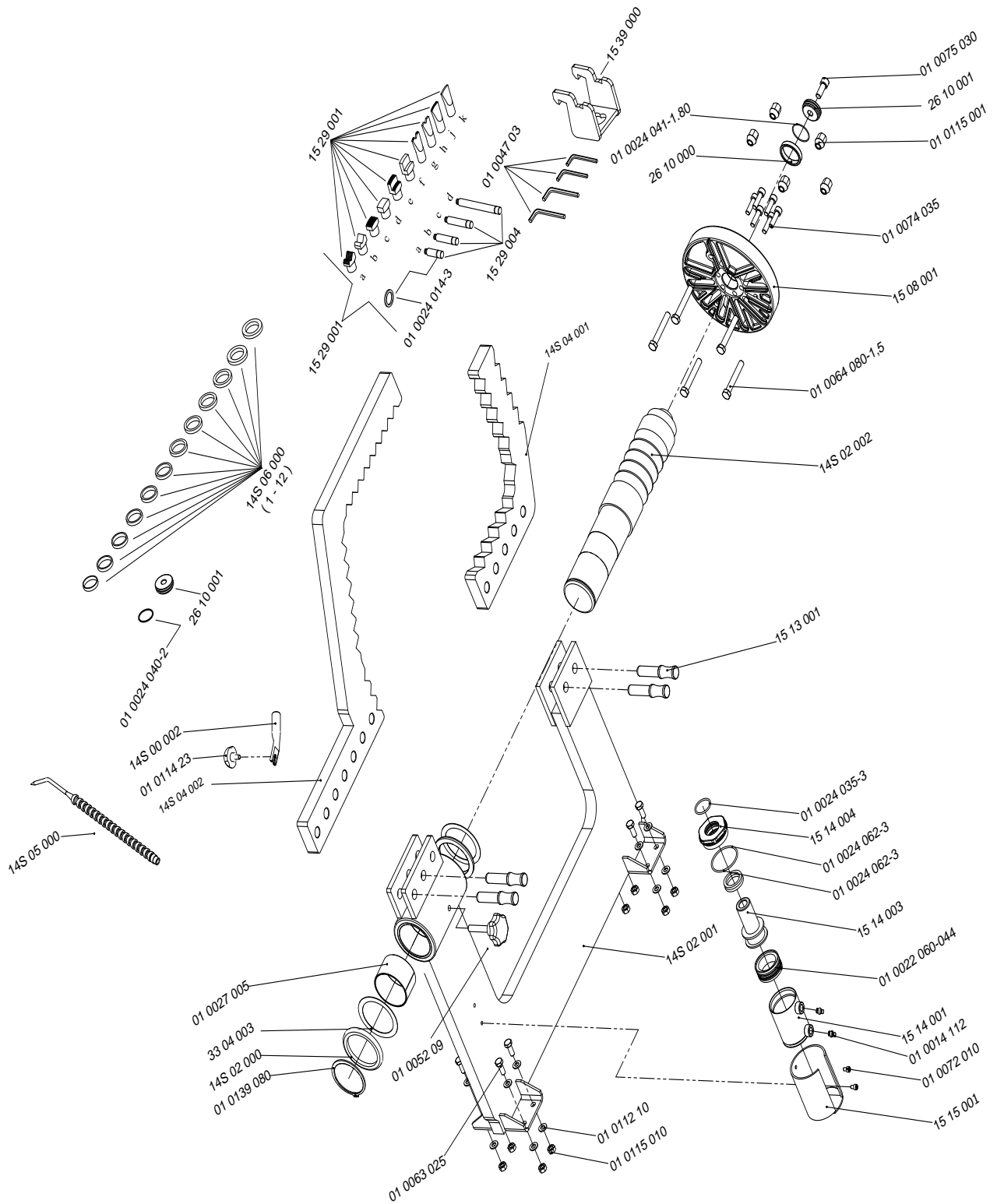
# ELECTRIC DIAGRAM



HYDRAULIC ENGINE

# DEMONTAGE PLAN





SPARE PARTS LIST FOR PO-14 S		
NO	COD NUMBER	DESCRIPTION
01	01 0047 03	Allen Head Set
02	15 29 000	Support Set With Miles Complete
03	15 29 001a	Angular Supports
04	15 29 001b	Angular Supports
05	15 29 001c	Square Supports
06	15 29 001d	Square Supports
07	15 29 001e	Gradual Supports
08	15 29 001f	Gradual Supports
09	15 29 001g	Cutter Type Supports
10	15 29 001h	Cutter Type Supports
11	15 29 001j	Cutter Type Supports
12	15 29 001k	Cutter Type Supports
13	15 29 004a	Supports Miles
14	15 29 004b	Supports Miles
15	15 29 004c	Supports Miles
16	15 29 004d	Supports Miles
17	01 0145 12	Hydraulic Pump
18	15 08 001	Rim Connect Flash
19	15 13 001	Hydraulic Cylinder Supports Pin Set.
20	14S 04 002	Hydraulic Cylinder Up Support.
21	14S 04 001	Hydraulic Cylinder Down Support.
22	01 0157 02	Hydraulic Control Valve.
23	15 14 000	Hydraulic Cylinder Complete
24	15 14 004	Hydraulic Cylinder Nut.
25	15 14 001	Hydraulic Cylinder
26	15 14 003	Hydraulic Cylinder Piston
27	01 0022 060 – 044	Hydraulic Compact Set.
28	01 0021 35 – 46,3 – 10	Wipper
29	01 0024 035*3	O – ring ( 35*3 )
30	01 0024 062*3	O – ring ( 62*3 )
31	01 0064 080-1,5	Rim Connect Screws
32	01 0115 001	Rim Connect Nuts
33	01 0014 20	Record 3/8" – 1/4"
34	01 0131 3-8	Copper Flake 3/8
35	01 0016 1800	Hydraulic Hose
36	14S 00 001	Depot Resource Sheet
37	01 0115 010	Nut
38	01 0115 08	Nut
39	01 0062 025	Bolt
40	01 0072 020	Bolt
41	01 0061 016	Bolt
42	01 0200 05	Switch
43	01 0113 010	Bolt M4x10
44	01 0117 008	Nut
45	01 0112 08	Washer
46	01 0198 16	Record (Plastic)
47	01 0063 025	Bolt
48	01 0112 10	Washer
49	15 15 000	Piston Pendent
50	01 0052 09	Baserotor To Stop Screw
51	15 22 001	Washers Centering
52	01 0074 035	Bolt
53	01 0139 080	Segment
54	14S 02 002	Spindle Of A Ladle
55	14S 03 000	Hydraulic Unit Group
56	01 0157 02	Hydraulic Control Valve
57	01 0014 21	Record Rotating Crank 3/8"
58	15 19 000	Oil tank
59	15 25 000	Up Cover Of Oil Tank
60	01 0137 1-2	Level gauge
61	01 0135 1-2P	Stopper
62	01 0014 20	Record 3/8"
63	01 0072 016	Bolt
64	01 0014 112	Record 3/8" – 1/4"
65	01 0149 02 (3-8)	Hydraulic Oil Filter
66	26 06 003	Pump Output Pipe
67	01 0271 01	Hydraulic Unit Engine
68	01 0111 006	Washer
69	01 0072 020	Bolt
70	01 0061 020	Bolt
71	01 0014 23	Nipple
72	15 32 004	Hydraulic Pump Clutch.
73	14S 03 002	Depot Return Pipe
74	14S 03 001	Pump Branch Connection Pipe
75	14S 02 000	Top Group
76	14S 01 000	Low Group
77	14S 00 002	Gauge Connection Pipe
78	01 0114 23	Knob M8

**SPARE PARTS LIST FOR PO-14 S**

<b>NO</b>	<b>COD NUMBER</b>	<b>DESCRIPTION</b>
79	14S 05 000	Magnetic gauge stick
80	14S 05 002	Stick connection plastic
81	01 0008 63	Spiral hose
82	26 10 001	Center flange
83	01 0024 040-2	O-ring
84	26 10 054.0	Rim to center washer – 54
	26 10 056.5	Rim to center washer – 56,5
	26 10 057.0	Rim to center washer – 57
	26 10 058.0	Rim to center washer – 58
	26 10 059.5	Rim to center washer – 59,5
	26 10 060.1	Rim to center washer – 60,1
	26 10 063.3	Rim to center washer – 63,3
	26 10 064.0	Rim to center washer – 64
	26 10 065.0	Rim to center washer – 65
	26 10 066.6	Rim to center washer – 66,6
	26 10 072.0	Rim to center washer – 72
26 10 072.5	Rim to center washer – 72,5	

# UNI - TROL®

MANUFACTURING PLANT & STORE

<http://www.unitrol.com.pl>

UNI - TROL Co. Ltd.

ul . Estrady 56 , 01 - 932 Warsaw , Poland  
tel.(+4822) 8179422 or 8349013 or 8349014 int. 117  
fax(+4822) 8179422 or 8349013 or 8349014 int. 115  
e-mail: [office@unitrol.com.pl](mailto:office@unitrol.com.pl) ; [office@unitrol.pl](mailto:office@unitrol.pl)

WHEEL BALANCING MACHINES  
TYRE CHANGERS

RIM STRAIGHTENING MACHINES  
EQUIPMENT FOR TYRESHOPS

Statistic no. : 008132994

EC VAT no. : PL5270205246

Register no. : KRS 0000111731

EORI no. : PL527020524600000

Account : for EURO : ALIOR BANK SA for EURO: no. PL 96 2490 0005 0000 4600 4784 6179 (swift code: ALBPPLPW)



## EU Declaration of Conformity

in accordance with directives : 2006/42/EU, 2014/35/EU, 2014/30/EU

We: **Uni-Trol Co. Ltd.**  
**Ul. Estrady 56**  
**01-932 Warsaw**  
**Poland**

declare, under our exclusive responsibility, that the product

### **WHEEL RIM STRAIGHTENING MACHINE** **Electromechanical and hydraulic device** **Model PO-14S**

serial number.....

concerned by this declaration, complies with all relevant requirements of the Machinery Directive:

- **Directive 2006/42/EU (safety machines),**

applicable in the essential requirements and relevant conformity assessment procedures, as well as on the essential requirements of the following directives:

- **Directive 2014/35/EU ( the low voltage );**

- **Directive 2014/30/EU ( the electromagnetic compatibility ).**

For verification of conformity with the provisions of law were consulted the harmonized standards or other norms documents :

PN-EN ISO 12100:2012P

Safety of machinery. Basic concepts, general principles for design. Part 1: Basic terminology, methodology

PN-EN 61000-6-3:2008P

Electromagnetic compatibility (EMC). Part 6-3: Generic standards. Emission standard for residential, commercial and light industrial (org.)

PN-EN 61000-6-4:2008P

Electromagnetic compatibility (EMC). Part 6-4: Generic standards. Emission standard for industrial environments (org.)

PN-EN ISO 13857:2010P

Safety of machinery. Safety distances to prevent reaching the upper limbs and lower the danger zones (org.)

PN-EN 349+A1:2010P

Safety of machinery. Minimum gaps to avoid crushing of parts of human body (org.)

PN-EN 60204-1:2010P

Safety of machinery. Electrical equipment of machines. Part 1: General requirements (org.)

PN-EN 61293:2000P

Marking of electrical equipment with ratings related to electrical supply - Safety requirements;

PN-EN ISO 4413:2011E

Hydraulic drives and controls - General rules and safety requirements for systems and their components

PN-EN ISO 11201:2012P

Acoustics - Noise emitted by machinery and equipment - Determination of emission sound pressure levels at a work station and at other specified positions in an essentially free field over a reflecting plane with negligible environmental corrections

PN-EN ISO 11202:2012P

Acoustics - Noise emitted by machinery and equipment - Determination of emission sound pressure levels at a work station and at other specified positions applying approximate environmental corrections

PN-EN ISO 4871:2012P

Acoustics - Declaration and verification of noise emission values of machinery and equipment

PN-EN 50419:2008P

Marking of electrical and electronic equipment in accordance with Article 11 (2) of Directive 2002/96/CE (WEEE)

The technical documentation mentioned product, as specified in Annex VII A, point 1 of the Machinery Directive, is located in the headquarters Uni-trol Ltd. (address as above) and will be made available to the competent national authorities for at least ten years from the date of the last piece.

The person responsible for the preparation of the technical documentation of the product and introducing changes in it, is MSc. Gregory Tworek - Member of the Board.

This EC Declaration of Conformity will be kept by the manufacturer of the product for 10 years from the date of produce the last unit and will available for market supervisory authorities for verification.

MSc. Gregory Tworek - Member of the Board.

Warsaw, 15.10.2019

.....  
*Signature*