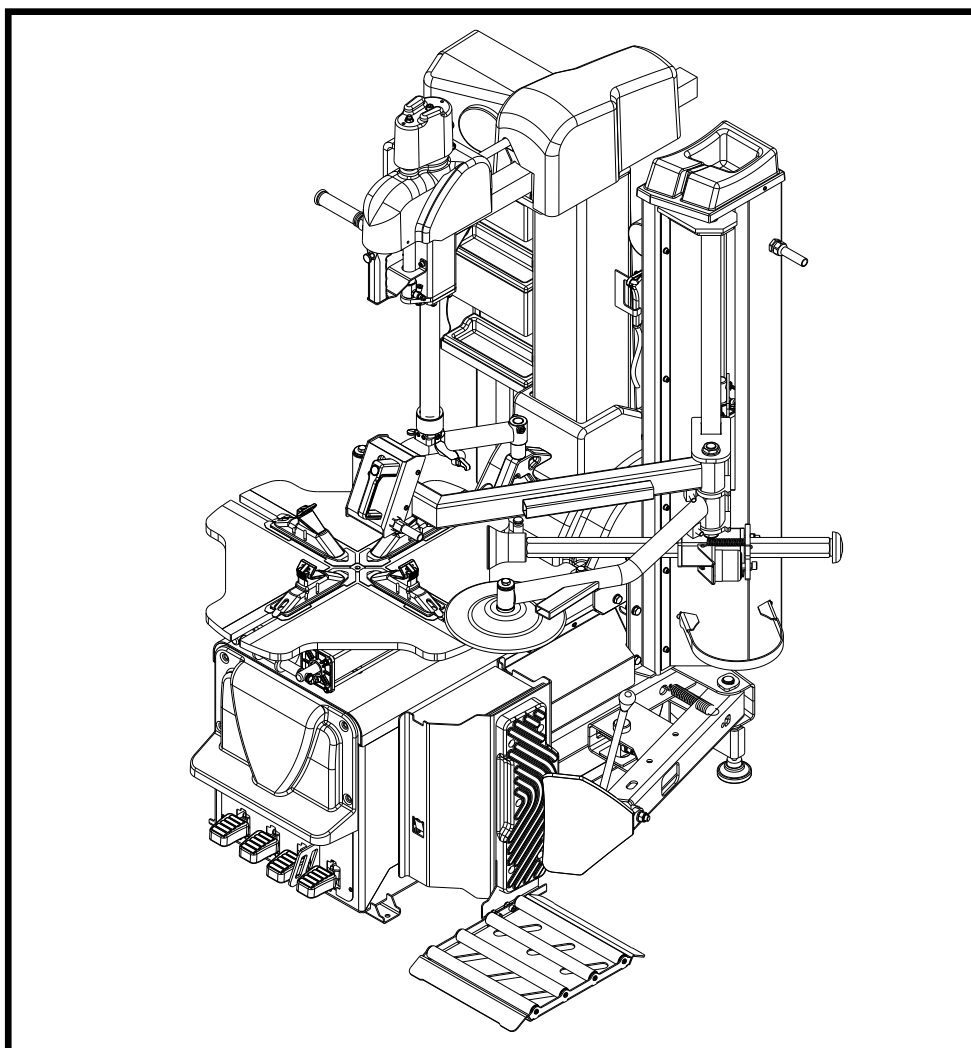


WWW.UNITROL.PL

UNI-TROL
GARAGE EQUIPMENT

ENGLISH

THE MANUAL



AUTOMATIC TYRE-CHANGER

MANAGER

WWW.UNITROL.PL



WARRANTY

Machines manufactured by UNI-TROL are warranted against defects in material and workmanship for a period of one (1) year from the date of sale.

Our company is not responsible for any damage or defects resulting from improper use of the device.

If defects and damage occur during the warranty, after analysis by technical personnel, in case of material and production defects the damaged parts will be replaced with new ones.

The warranty covers all parts of the machine.

NOTE: for the electric motor to be under warranty a thermal switch matching the motor current must be placed in the electric wiring, otherwise in case of any fault the electric motor will not be covered by the warranty.

Perform maintenance on the machine periodically, monthly, once a year. Defects and damage caused by lack of maintenance are not under the warranty.

The manufacturer reserves the right to make changes to the equipment without notifying the customer.

Sale Date :
Seller Company;

ATTENTION !

- **This manual is an integral part of the machine. Read carefully the content of the manual and its appendices.**
- **The information contained in this manual is important for machine's safe use and maintenance.**
- **Keep this manual in order to avoid problems with the machine in the future.**

The machine is used for the automatic assembly and disassembly of tyres for passenger cars and vans. The machine is designed to work only in accordance with the instructions given in this manual. The machine may only be used for activities for which it was designed. Any other use is improper and not permitted. The manufacturer is not responsible for any damage or accidents resulting from improper, incorrect or forbidden use of the machine.

IMPORTANT !

- Only trained and experienced personnel may use, repair and service this machine.
- The service life of the machine is 10 years.

TABLE OF CONTENT

	<u>page</u>
1. General information	3
2. Technical data	3
3. Machine components	4
4. Packaging, Transport, Storage	4
5. Introduction	5
6. Safety measures	5-6
7. Installation	7
8. Electric diagram	8
9. Operations and use	9-10
10. Maintenance	10-11
11. Technical service and warranty	11
12. Service Notes	12
13. Machine diagram	13-15
14. Spare parts list	16-19

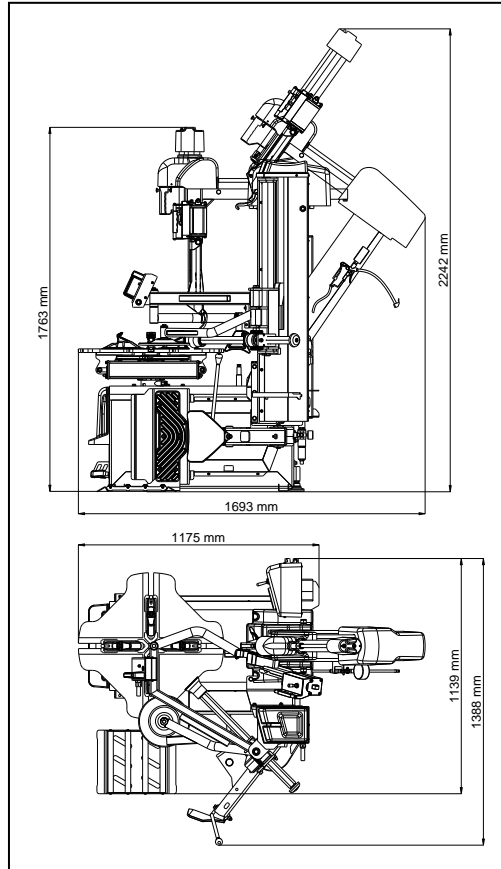
TECHNICAL DATA

DIMENSIONS:

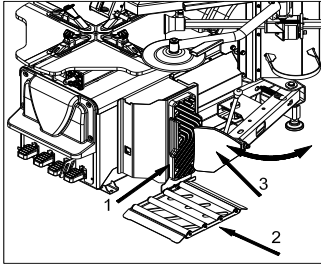
Height1.763 – 2.242 mm
 Depth1.175 – 1.693 mm
 Width.....1.139 – 1.393 mm

MOTOR DATA			
POWER	VOLTAGE	PHASE	H Z
<input type="checkbox"/> 0,75 kw	<input type="checkbox"/> 110 V <input type="checkbox"/> 220 V <input type="checkbox"/> 380 V	<input type="checkbox"/> 1	<input type="checkbox"/> 50 Hz
<input type="checkbox"/> 1,1 kw	<input type="checkbox"/> 400 V <input type="checkbox"/> 415 V	<input type="checkbox"/> 2	<input type="checkbox"/> 60 Hz
VELOCITY	50 Hz / 1500 d/d	60 Hz / 1750 d/d	
NOISE LEVEL db		

Weight Netto.....380 kg
 Rim dimensions.....10" – 24"
 Wheel clamp.....Pneumatic
 Bead-breaker system.....Pneumaic
 Tilting systemPneumaic
 Head clamping systemPneumatic
 Max. working pressure.....8 bar



MACHINE COMPONENTS



BEAD BREAKER SYSTEM quickly and easily detaches the tire from the rim 10" to 24".

1 –BEAD-BREAKER PAD: supports the tyre during the bead-breaking process.

2– TYRE ROLLER: rolls the tyre during the process.

3–BEAD BREAKER : detaches the tire from the rim

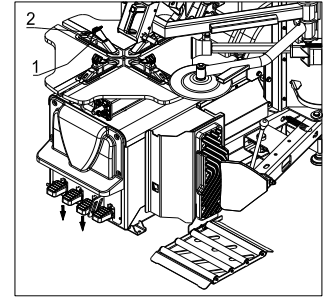
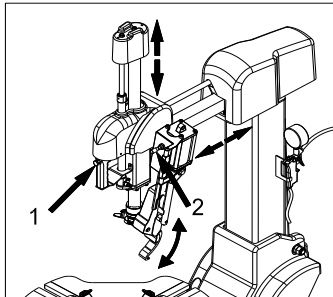


TABLE 10" – 24" clamps all rims from the inside and outside

1 – JAW

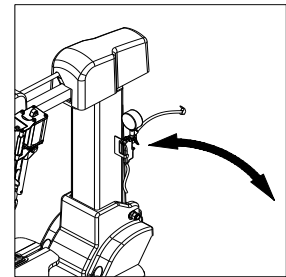
2 – SLIDER



WORKING HEAD

1 – LOCKING VALVE

2 – AUTOMATIC LEVERLESS FINGER.



INFLATOR

PACKAGING, TRANSPORT, STORAGE

Please read this manual carefully before packing, transporting and unpacking the machine. The above-mentioned activities should be performed by authorized, qualified personnel who understand all the instructions and warnings contained in the manual.

PACKAGE

The machine is stored on a wooden pallet in a wooden crate.

LIFTING AND MOVING

The machine should be transported / moved with a forklift / hoist in compliance with all safety rules. The machines's dimensions and weight should be taken into account.

STORAGE

The machine is stored in the temperature range from -10°C to $+40^{\circ}\text{C}$ in closed and secured rooms. The machine should be protected from direct sunlight and moisture.

UNPACKING

On machine arrival check that it is not damaged and that all parts are complete. When unpacking, be careful not to damage the machine and protect its elements against falling.

DISPOSAL OF PACKAGING

The packaging is reusable. Comply with local regulations when disposing of it.

INTRODUCTION

ATTENTION !

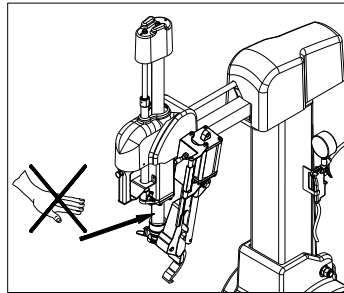
This manual is intended for qualified personnel who routinely use this equipment, service, inspect and repair it. Be sure to read the instruction manual before operating this unit. The manual should be kept near the machine in a place easily accessible for the user / service technician. Transport, commissioning, maintenance and repair of the device should be performed by authorized specialists. The manufacturer bears no responsibility for injuries and damages resulting from operations inconsistent with these operating instructions.

SAFETY MEASURES



Read the manual before starting to work with the machine

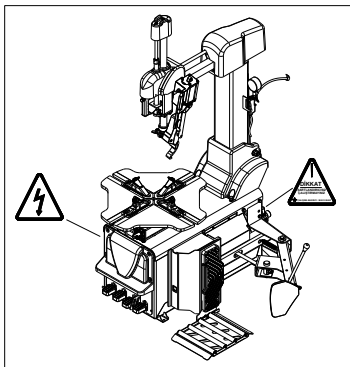
ATTENTION !
THE VOLTAGE SHOULD BE ACCORDING TO THE TECHNICAL DATA



Keep hands away from the machine shaft.



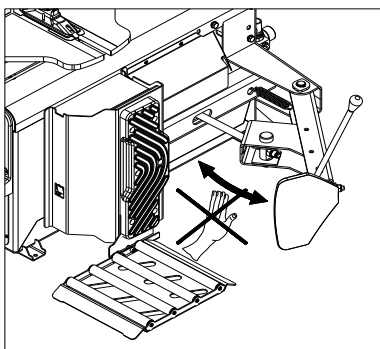
Do not work without gloves and glasses



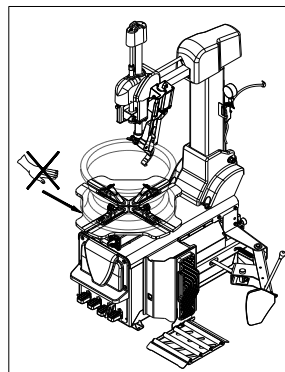
Do not open the cover of the machine under voltage. It could cause an accident. If necessary, contact the manufacturer's service department.

Max. working pressure 8 bar.

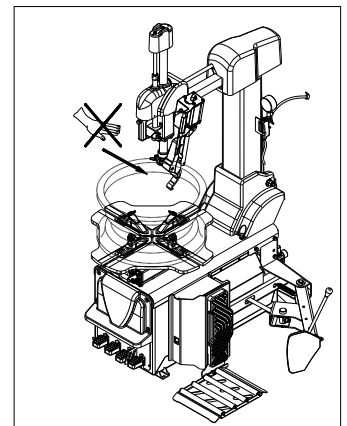
WARNING !
BEFORE OPENING THE COVERS DISCONNECT THE POWER SUPPLY.



Do not get your hands or feet between the bead-breaker and the tyre.



Do not put your hands between the jaws on the table.



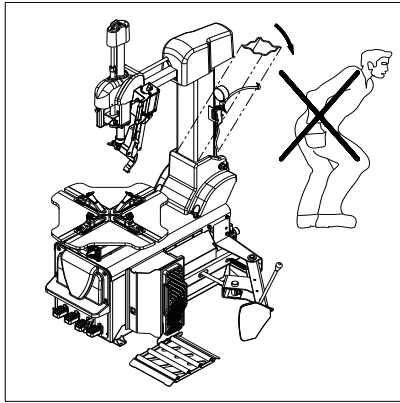
Do not put your hands between the rim and the working head



TO PREVENT ACCIDENTS KEEP HANDS AND OTHER BODY PARTS AS POSSIBLE FROM THE WORKING HEAD ARMS WHILE OPERATING WITH THE TABLE.



DO NOT PUT YOUR HANDS UNDER THE RIM WHILE CLAMPING IT. PLACE THE WHEEL EXACTLY IN THE CENTER OF THE TABLE AND MAKE SURE IT IS FIXED WELL WITH ALL FOUR JAWS



Do not stand behind the column during operation.



BEAD-BREAKING MUST BE DONE WITH THE GREATEST CARE. EVERYTHING THAT'S IN THE BEAD BREAKER AREA MAY BE EXPOSED TO BREAKING OR DAMAGE



NEVER TOUCH THE RIM WITH YOUR HANDS DURING THE BEAD-BREAKING



BE AWARE OF THE FAST MOVING ELEMENTS OF THE BEAD-BREAKER SYSTEM.

The voltage should correspond to the value on the nameplate.

Connecting the machine to electric supply should be made by an experienced electrician.

Please read the manual carefully before using the machine.

Do not touch the square shaft of the machine.

Do not work without glasses and gloves

Do not let unqualified personnel operate the machine.

Keep your hands away from moving parts while the machine is in operation.

Do not open the cover of the machine while it is under the voltage . It could cause an accident. If necessary contact the manufacturer's service department.

During the bead-breaking process do not put your hands and feet between the bead-breaker and the tyre.

When working with the rim do not put your hands between the table jaws

Do not keep your hand between the working head and the rim when mounting and dismantling the tyre.

Do not stand behind the column while the machine is working.

If there is any abnormal noise or an undesirable situation during operation contact the technical service.

Protect the machine cable from mechanical and chemical damage. Don't let it get damaged.

Do not use the cable if it is partially or completely damaged, torn contact our technical service for replacement.

Always keep the machine clean.

Do not use the pressure washer when cleaning and maintaining the machine. Do not use conductive or semi-conductive materials such as water. Protect the machine from moisture, rain, snow, hail or fog.

The machine has been designed and built for mounting and dismantling tyres, use it only for this purpose and use only the accessories specified.

Follow the directions on the labels.

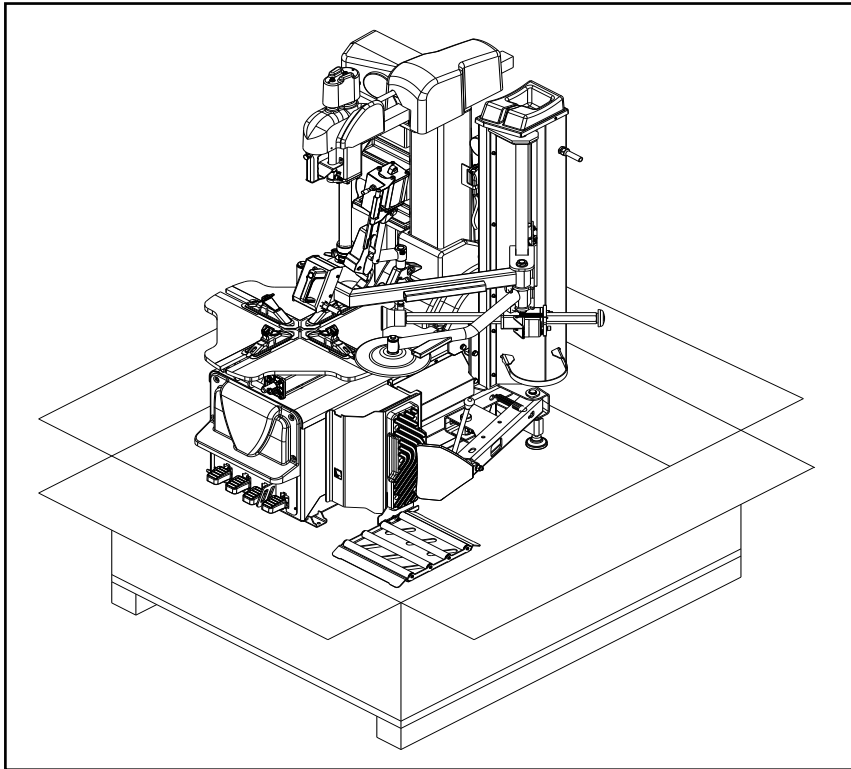
It is not allowed to make changes to the construction and factory settings of the machine on your own. Use only original spare parts. If necessary, contact the technical service.

Nobody, except the user of the machine, may approach it closer than 1.5 m.

Unqualified personnel cannot operate the machine.

Keep your hands away from moving parts while the machine is in operation.

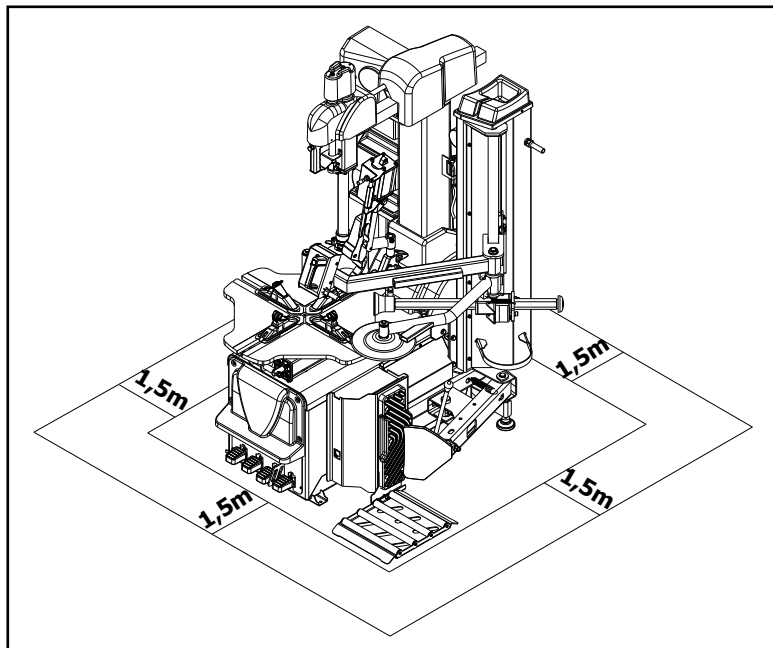
INSTALLATION



When unpacking the machine check that it has not been damaged during transport and that parts and accessories are not missing.

Insert the appropriate plug into the device, the plug must be three-phase, the four cells should contain these 3 phases + 1 neutral wire.

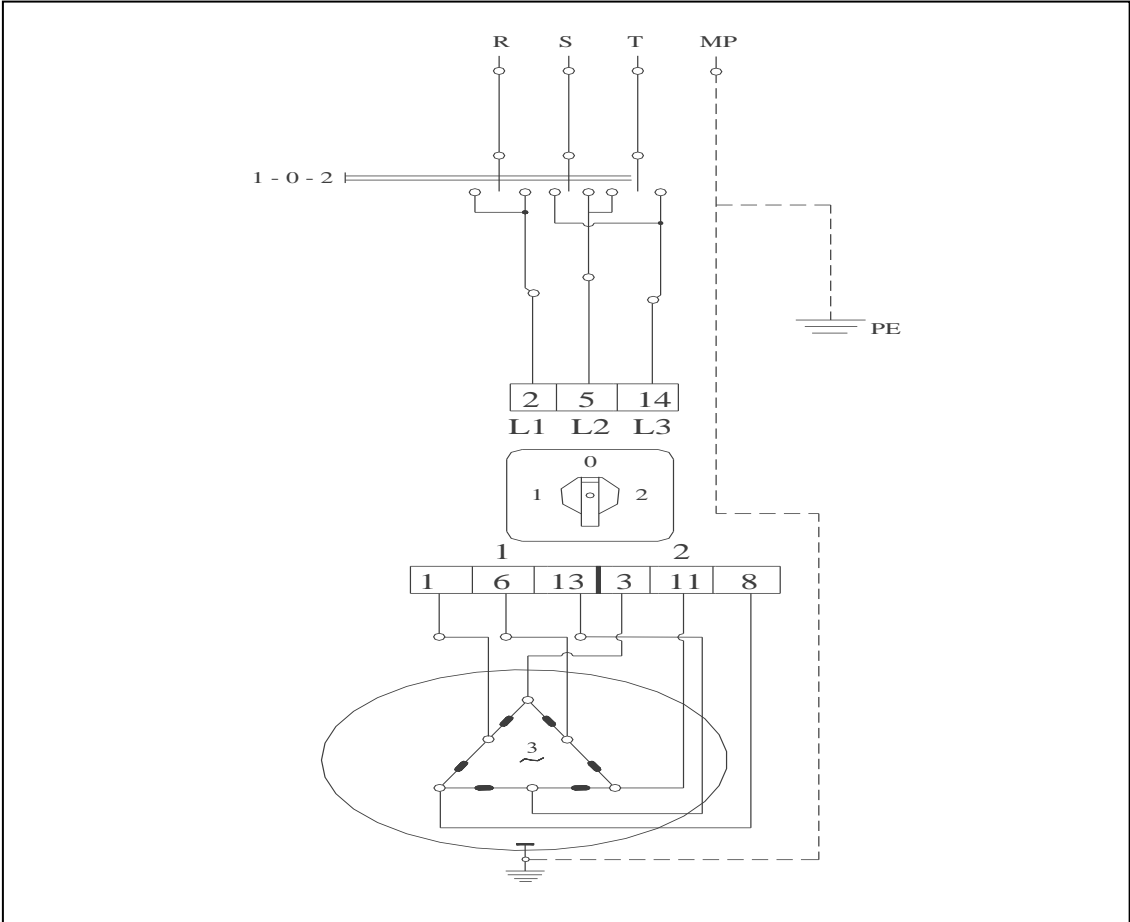
After connecting to the power supply the machine is ready for operation.



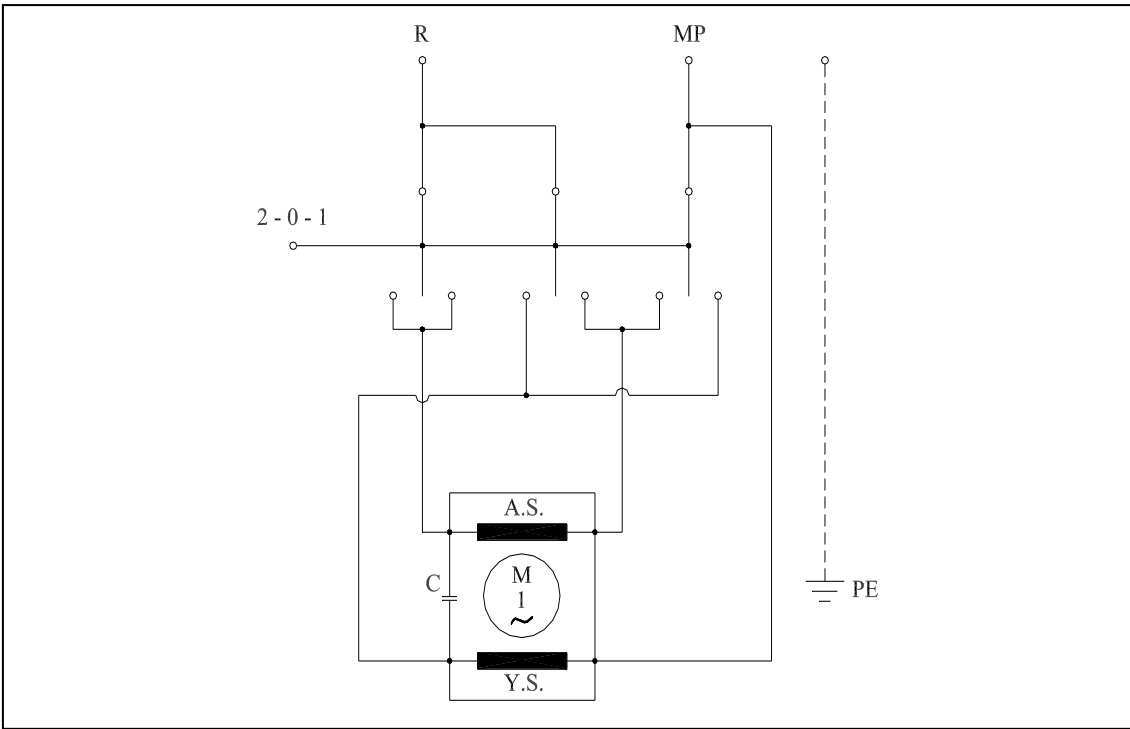
When the machine is in operation no one except the user of the machine may approach it closer than 1.5 m.

ELECTRIC DIAGRAM

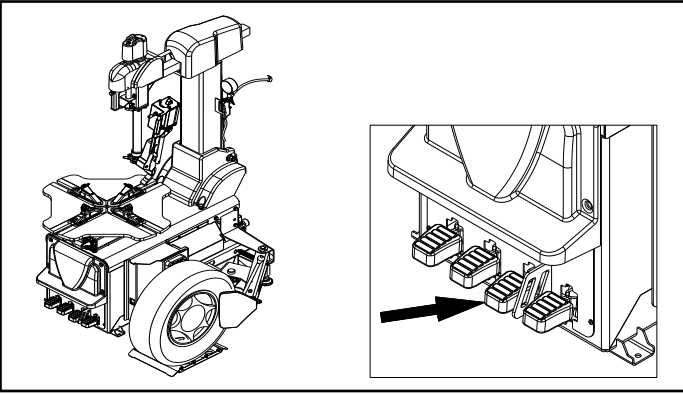
3 PHASES



1 PHASE

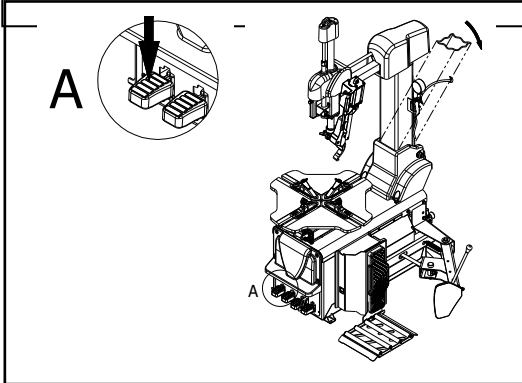


OPERATIONS AND USE

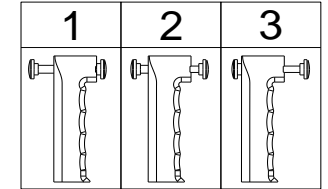
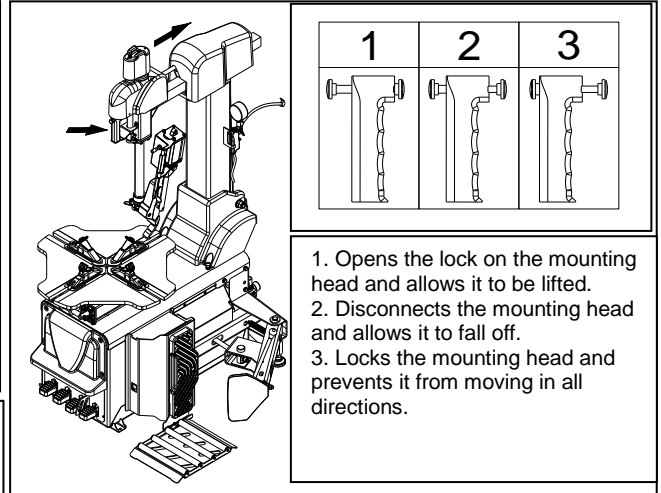


1 – BEAD-BREAKING

Pull the bead-breaker lever with your hand, insert the wheel between the bead-breaker shovel and the rubber pad on the wall of the mounting machine and move the shovel to the tyre, right next to the rim edge. While holding the shovel in the correct position, depress the pedal and keep it pressed until the tyre breaks away from the rim edge. If necessary, repeat this operation at several points around the circumference of the circle. Then turn the wheel over and release the tyre in the same way from the rim on the other side of the wheel.



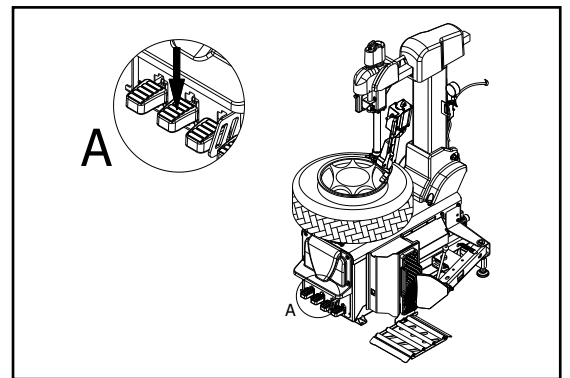
- Press the pedal to tilt the column.



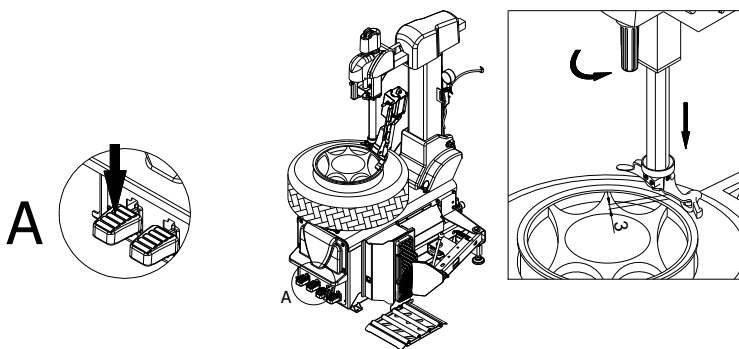
1. Opens the lock on the mounting head and allows it to be lifted.
2. Disconnects the mounting head and allows it to fall off.
3. Locks the mounting head and prevents it from moving in all directions.

2 – TYRE DEMOUNTING

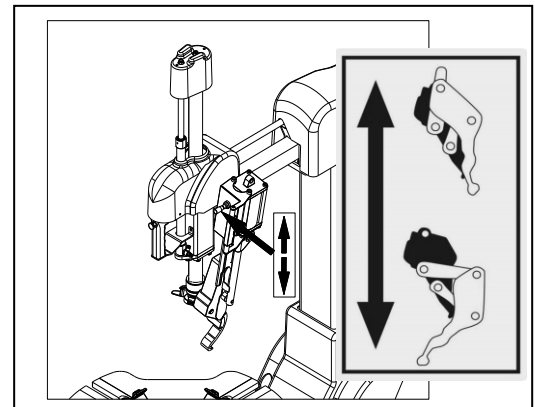
- Set the locking valve to position 1 and after lifting the mounting head set to position 3 and lock it.



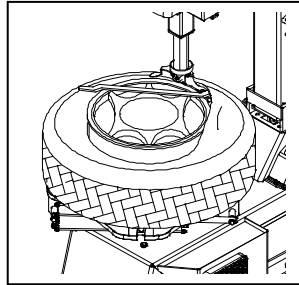
- Put the tyre on the table
- While pressing the pedal clamp the rim with the jaws (from the outside for steel rims and from the inside and outside for aluminum rims).



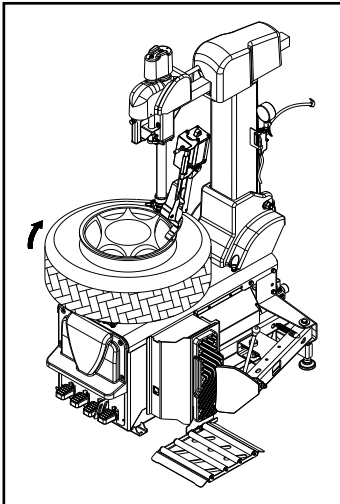
- Raise the pedal to return the column to the vertical.
- Set the locking valve to the middle position, place the foot on the rim and turn the valve counterclockwise to lock it.



- To open the valve of the automatic mount / dismount lever pull the valve down so that the head rests on the tyre surface.
- Next raise the valve and make it rest on the heel of the working head presser.



- Remove the inner tube if the tyre has one.
- The lower edge of the tyre is removed from the rim without changing the wheel or mounting head position.



3 – TYRE MOUNTING

Use the pedal to tilt the column back.
 Use the pedal to open the table jaws.
 Place the rim on the assembly table.
 Check that the jaws of the jaws firmly clamp the edge of the rim.
 Move the pedal to the up position - the column will return to the vertical
 Lay the tyre on the rim.
 By extending the bolt to the appropriate distance and pressing the tip of the vertical bolt, make the working head rest on the edge of the rim inside the tyre.
 Place the tyre foot on the bead fin and press it under the head.
 Pressing the side of the tyre with your hand in the place where its edge sticks out over the edge of the rim, cause it to jam and hold with your hand.
 While depressing the pedal turn the table clockwise placing the edge of the tyre in the groove of the rim until the lower tyre edge is placed on the rim.
 In case of any abnormalities while installing the tyre such as a jam, release the pedal and then lift it with your foot upwards.
 The table will then turn to the left and release the jammed tyre.
 Fit the inner tube.
 Place the top edge of the tyre on the rim in the same way as for the bottom edge.

DURING MOUNTING/DEMOUNTING WHEN THE TYRE SPLINKS, HOLD THE PEDAL UP AND ADJUST THE TYRE.

MAINTENANCE

UNI-TROL is not responsible for claims resulting from the use of non-original parts or accessories.

Before carrying out any adjustments or maintenance to the machine disconnect the power supply and check that all moving parts are properly secured.

Do not disassemble or modify any part of the device. This does not apply to servicing.

Check that the jaws move freely daily. Contamination accumulated during the operation of the machine may significantly deteriorate the sliding of the jaws, thus creating a hazard for the user.

Check on an ongoing basis whether the table jaws and the sliders move freely. Contamination accumulated during the operation of the machine may significantly deteriorate its sliding, limiting its wear and creating a hazard to the user.

Therefore if necessary wash the rails and bolts with a petroleum solvent and then moisten with thin oil or silicone preparation.

Monthly check:

Clean (gasoline only) and lubricate the horizontal and vertical slide in the right places.

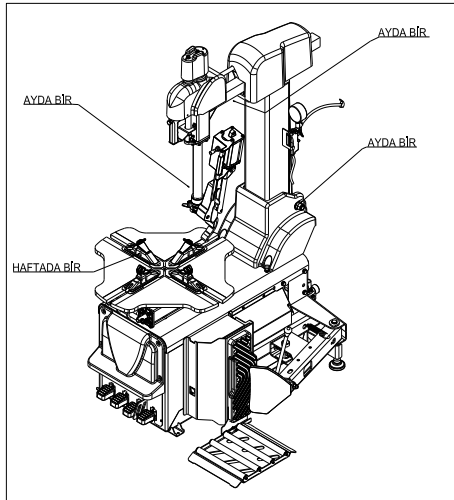
Check the oil level in the grease gun and, if necessary, add HL 32 (hydraulic) or a parametric equivalent of a different manufacturer.

Keep the workplace clean. Do not clean the device with pressurized water. Avoid generating dust when cleaning.

The assembly table is powered by an electric motor via a worm gear lubricated with Shell OMALA oil 680 or a parametric equivalent of a different manufacturer's oil. After 4,000 hours of work (after deduction of breaks), the gear must be cleaned and the oil changed.

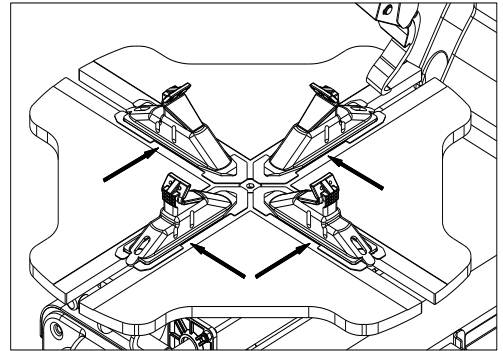
Periodically you should also remove the oil from the inside of the housing box. Exhalation of the lubricated air, as in all devices of this type, takes place inside the housing, which causes the oil to settle on its internal surfaces, and as a result to leak it.

OIL



Lubricate and clean the machine regularly and on time. During the lubrication process keep the tools away from dust and water, do not lubricate unnecessary parts with oil.

JAWS SYSTEM



Clean the jaw system regularly with compressed air.

TECHNICAL SERVICE AND WARRANTY

- THE WARRANTED IS 1 YEAR;
- IN CASE OF PROBLEMS PLEASE CHECK THE SERVICE NOTES SECTION;
- IF THE PROBLEM CANNOT BE SOLVED CALL THE MANUFACTURER'S AFTER-SALES SERVICE PROVIDING THE MACHINE MODEL AND ITS SERIAL NUMBER.

WARNING !

ALL WORK WITH THE MACHINE SHOULD BE PERFORMED BY AUTHORIZED TRAINED PERSONNEL.

*** THE ELECTRIC MOTOR IS NOT COVERED BY THE WARRANTY.

WARNING !

ONLY ORIGINAL SPARE PARTS SHOULD BE USED. THE MANUFACTURER SHALL NOT BE LIABLE FOR DEFECTS CAUSED BY THE USE OF NON-ORIGINAL SPARE PARTS.

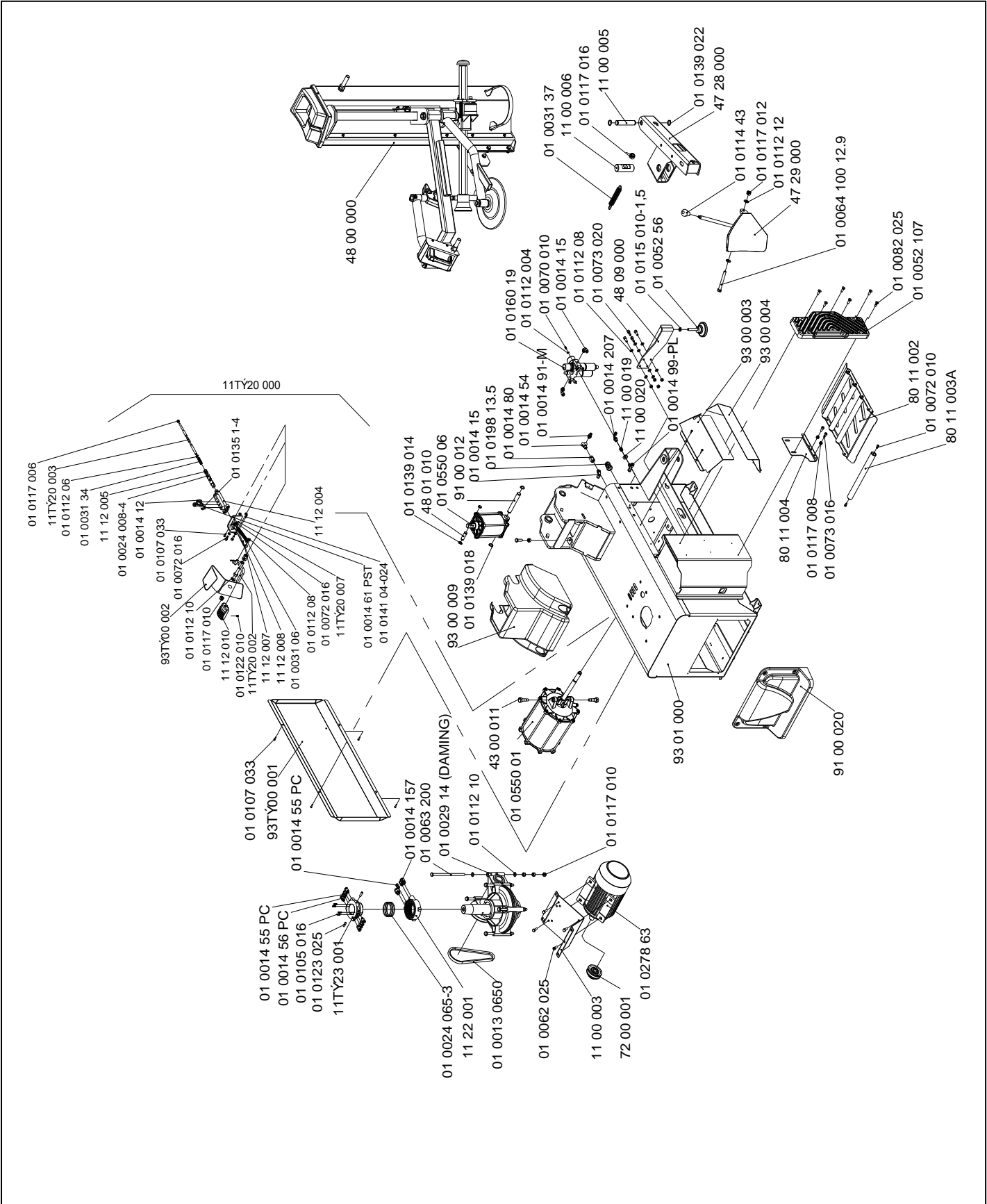
WHEN ORDERING SPARE PARTS PROVIDE:

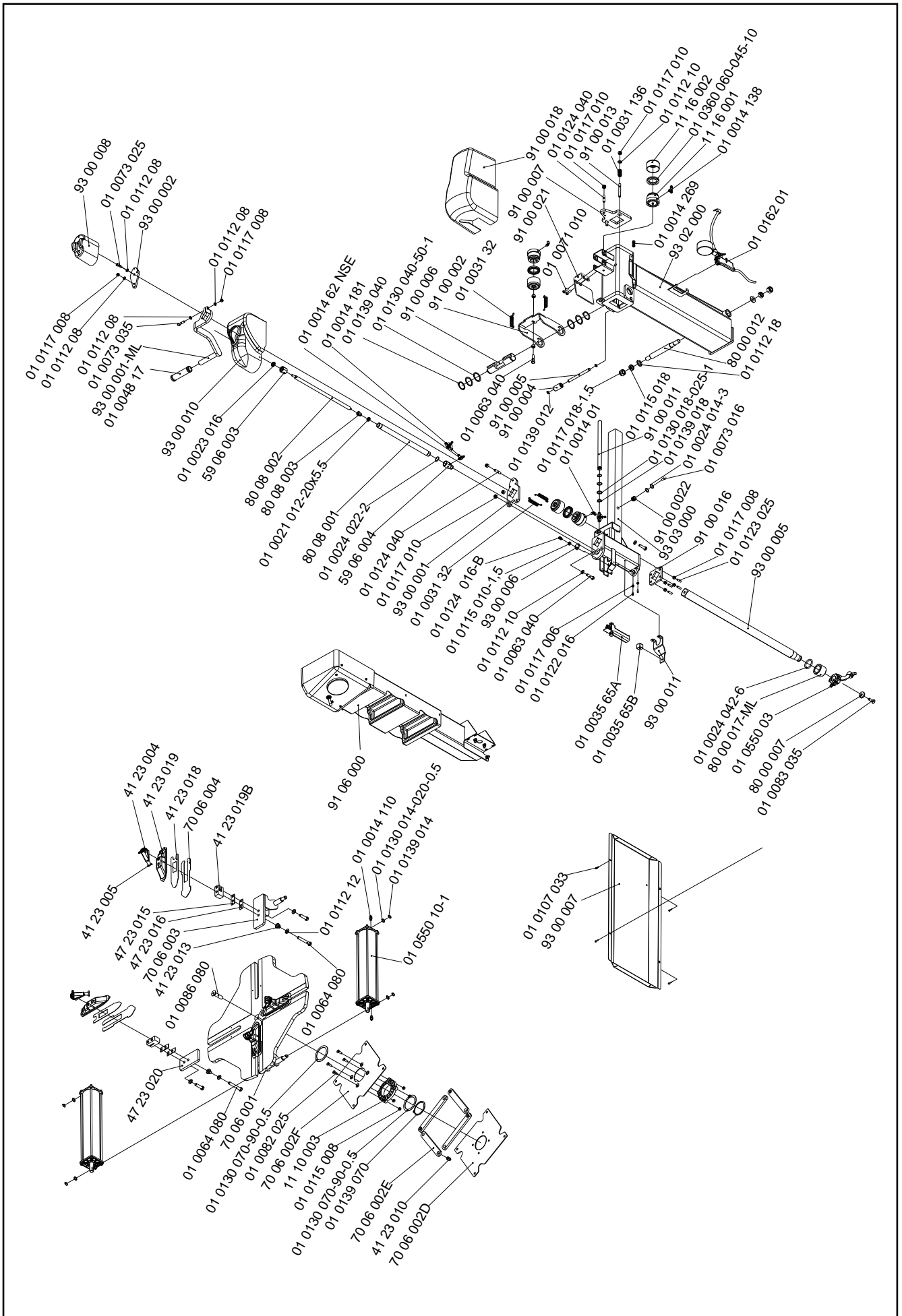
- SERIAL NUMBER AND YEAR OF PRODUCTION.
- PART CODE AND QUANTITY

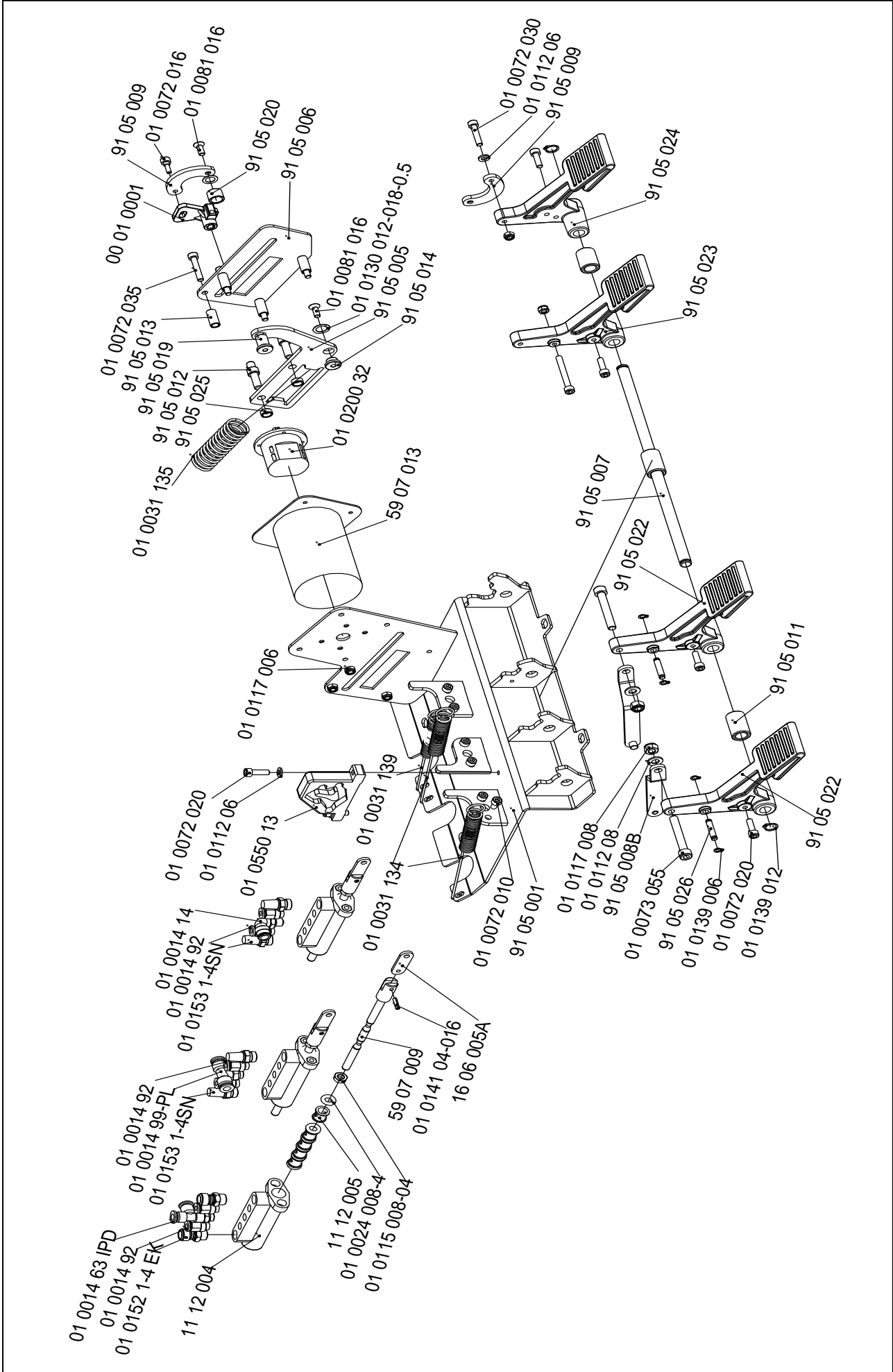
SERVICE NOTES

FAULT	POSSIBLE CAUSES	TROUBLE SHOOTING
The fuses are blown when you press the table rotation pedal	Short circuit of the motor power cable to ground. Short circuit in the motor	Check the wires
The table rotation pedal does not return to the center position	Broken pedal spring	Replace the spring
The bead-breaker pedal and table pedal do not return to initial position	No oil in the grease gun	Fill the lubricator with HL 32 (hydraulic) oil
	Broken pedal spring	Replace the spring
Air escapes at the bead-breaker piston	Worn air seal	Replace the gasket
Difficulties with the table when dismantling and installing tyres	Belt tension insufficient	Adjust belt tension or replace belt
Pressure gauge indicator does not return to 0	Defective pressure gauge	Replace the pressure gauge
The wheel does not stay on the table	Low air supply pressure	Adjust (check) the pressure of the supplied air
	Jaws are worn	Replace jaws
The table does not turn in either direction	No electric power	Check electric supply
	Damaged motor	Replace the motor
	Broken belt	Replace belt

MACHINE DIAGRAM







SPARE PARTS LIST		
Number	CODE	DESCRIPTION
1	93 01 000	LOWER BODY GROUP
2	93 02 000	PILLAR GROUP
3	93 03 000	TYRE MOUNTING ARM GROUP
4	70 06 000	FLANGE GROUP
5	70 06 001	FLANGE BODY GROUP
6	70 06 002	CROSS GROUP
7	01 0130 070-90-0.5	RAYNEL WASHER
8	41 23 013	PRESS METAL SLIDING BEAR
9	01 0130 014-020-0.5	RAYNEL WASHER
10	01 0139 014	MILE SEGMENT
11	01 0112 12	WASHER
12	01 0064 080	BOLT
13	41 23 004	JAWS
14	41 23 005	JAWS PLASTIC
15	01 0139 070	MILE SEGMENT
16	70 06 003	LEG CONNECTION METAL GROUP
17	47 23 020	LEG CONNECTION GROUP
18	41 23 019	RIM HOLDING LEG GROUP
19	41 23 018	LEG LOWER PROTECTING METAL SHEET
20	70 06 004	RIM HOLDING ARM
21	47 23 016	RIM HOLDING LEG METAL SHEET THIN
22	47 23 015	RIM HOLDING LEG METAL SHEET
23	01 0064 045	BOLT
24	01 055010	BRAVA MAXI FLANGE CYLINDER DAMING
25	01 0014 110	RECORD
26	01 0072 016	BOLT
27	01 0112 06	WASHER
28	01 0035 65	HAND REMOTE VALVE GROUP
29	01 0070 010	BOLT
30	01 0112 004	WASHER
31	01 0160 19	FILTER + REGULATOR
32	01 0073 020	BOLT
33	01 0052 56	PROFILE LEG
34	48 09 000	SIDE BODY HEIGHT GAUGE GROUP
35	93 00 011	VALVE LOWER CONNECTION METAL SHEET
36	01 0063 025	BOLT
37	01 0083 035	BOLT
38	80 00 007	AUTOMATIC LEVER LOWER PRESSING WASHER
39	93 00 001-ML	HOLD ARM GROUP
40	01 0048 17	PLASTIC HANDLE
41	80 00 017-ML	BURSH
42	01 0024 042-6	O – RING
43	01 0550 03	MOUNTING FOOT
44	48 00 000	PLUS MAIN BODY
45	93 00 004	RIGHT LOWER CAP
46	93 00 003	RIGHT UPPER CAP
47	93 00 008	MANAGER SQUARE MILE UPPER CAP
48	93 00 009	PILLAR LOWER ABS
49	93 00 010	MANAGER SQUARE ABS
50	01 0073 025	BOLT
51	01 0112 08	WASHER
52	01 0115 010-1,5	NUT
53	01 0124 016-B	SETSCREW WITH BALL
54	93 00 006	VALVE STOPPER METAL SHEET
55	93 00 002	CYLINDER UPPER CONNECT METAL
56	93 00 005	SQUARE MILE
57	93 00 001	SQUARE UPPER SHEET
58	80 08 000	HEXAGON MILE CYLINDER GROUP
59	80 11 000	TYRE REEL GROUP
60	01 0278 63	MOTOR
61	93T 00 001	COVER
62	01 0130 018-025-1	RAYNEL WASHER
63	91 00 022	DISTANCE SETTING BUSHER
64	91 06 000	PROFESSIONAL AIR GAUGE
65	01 0123 025	SETSCREW
66	01 0122 016	SETSCREW
67	01 0117 008	NUT
68	01 0117 006	NUT
69	91 00 016	SQUARE LOWER WEDGE METAL
70	01 0107 033	METAL SHEET SCREW
71	91 00 001	PEDAL SYSTEM CAP GROUP
72	01 0162 02	TYRE INFLATOR

SPARE PARTS LIST

Number	CODE	DESCRIPTION
73	01 0013 0650	V - BELT
74	72 00 001	MOTOR PULLEY GROUP
75	01 0115 008	NUT
76	01 0062 025	BOLT
77	01 0139 022	MILE SEGMENT
78	01 0082 025	BOLT
79	01 0052 107	TYRE CHANGER BEAD BREAKER RUBBER
80	01 0031 37	ARM PULLING SPRING
81	01 0117 016	NUT
82	11 00 006	BEAD BREAKER PULLING METAL
83	11 00 005	BEAD BREAKER CONNECT PIN
84	47 30 000	BEAD BREAKER GROUP
85	01 0014 91-M	QUICK CAPLIN RECORD MALE
86	01 0014 54	RECORD
87	01 0198 13.5	PLASTIC CABLE RECORD
88	01 0014 99-PL	RECORD
89	01 0014 207	RECORD
90	11 00 020	NUT
91	11 00 019	REDUCTION
92	01 0014 80	SLEEVE
93	01 0014 15	RECORD
94	43 00 011	BEAD BREAKER CYLINDER CONNECT BOLT
95	01 0550 01	BEAD BREAKER CYLINDER GROUP
96	01 0063 030	BOLT
97	01 0139 014	MILE SEGMENT
98	48 01 010	PISTON CONNECTION MILE
99	01 0139 018	MILE SEGMENT
100	01 0139 012	MILE SEGMENT
101	01 0139 040	MILE SEGMENT
102	01 0031 136	BACK STRECHING METAL PUSHING SPRING
103	91 00 013	STRECHING METAL GAUGE PIN
104	01 0014 269	NIPPEL
105	91 00 002	STRECH MOVEMENT METAL SHEET
106	91 00 011	HOSE WAY PIPE
107	01 0031 32	BACK STRECH SPRING
108	01 0124 040	SETSCREW
109	01 0014 01	RECORD
110	01 0014 138	RECORD
111	01 0063 040	BOLT
112	01 0117 010	NUT
113	01 0130 040-50-1	RAYNEL WASHER
114	01 0117 018-1.5	NUT
115	01 0115 018	NUT
116	01 0112 18	WASHER
117	80 00 012	PILLAR SLIDING MILE
118	91 00 007	TYRE MOUNTING ARM STRECTHING METAL
119	59 09 000	BACK STRECHING CYLINDER GROUP
120	11 16 000	STRECHING CYLINDER GROUP
121	91 00 005	SLIDING REEL MILE
122	91 00 004	SQUARE SLIDING REEL
123	91 00 006	FRONT STRECHING MILE
124	11 00 003	MOTOR CONNECT METAL SHEET
125	01 0063 170	BOLT
126	01 0112 10	WASHER
127	01 0063 200	BOLT
128	01 0086 080	BOLT
129	01 0029 14 (DAMING)	BRAVA REDUCTION
130	01 0073 016	BOLT
131	91 00 012	HEAD REMOVAL CYLINDER LOWER CONNECTION MILE
132	91 00 020	UPPER BIG ABS
133	91 00 018	PILLAR UPPER ABS
134	11TI 23 000	AIR DISTRIBUTOR GROUP
135	91 05 000	PEDAL GROUP
136	01 0550 06	HEAD REMOVAL CYLINDER
137	91 05 001	PEDAL BODY GROUP
138	91 05 002	HEAD BREAKING AND FLANGE PEDAL GROUP
139	91 05 003	BEAD BREAKER PEDAL GROUP
140	91 05 004	POWER SWITCH PEDAL GROUP
141	91 05 007	PEDAL CONNECTION MILE
142	91 05 010	PEDAL INTERMEDIATE METAL BIG
143	91 05 011	PEDAL INTERMEDIATE METAL SMALL
144	91 05 018	BEAD BREAKER VALVE GROUP
145	91 05 017	FLANGE CYLINDER VALVE GROUP
146	91 05 016	HEAD REMOVAL CYLINDER VALVE GROUP
147	01 0072 025	BOLT

SPARE PARS LIST

Number	CODE	DESCRIPTION
148	01 0031 139	BEAD BREAKER PEDAL PULLING SPRING
149	01 0122 010	SETSCREW
150	11 12 010	PLASTIC PEDAL
151	01 0072 035	BOLT
152	01 0072 020	BOLT
153	91 05 012	DISTANCE GAUGE MILE
154	91 05 006	POWER SWITCH SPRING CAP METAL SHEET
155	72 02 002	BOLT
156	91 05 013	CAP CONNECTION METAL
157	01 0081 016	BOLT
158	91 05 009	POWER SWITCH LOCATION MOVEMENT METAL SHEET
159	01 0130 012-018-0.5	RAYNEL WASHER
160	91 05 014	POWER SWITCH METAL SHEET SLIDING METAL
161	91 05 005	POWER SWITCH SPRING BEARING METAL
162	01 0031 135	SINGLE AND DOUBLE CYCLE POWER SWITCH SPRING
163	59 07 013	POWER SWITCH CAP OPERATION PICTURE
164	00 01 0001	POWER SWITCH LATCH
165	01 0200 23	POWER SWITCH
166	01 0031 134	PEDAL PULLING SPRING
167	01 0072 055	BOLT
168	01 0072 040	BOLT
169	01 0031 29	GAUGE MILE PRESS SPRING
170	01 0117 008	NUT
171	01 0073 055	BOLT
172	01 0112 10	WASHER
173	91 05 008	MOVEMENT GUIDE METAL SHEET GROUP
174	01 0115 005	NUT
175	01 0071 010	BOLT
176	01 0072 010	BOLT
177	01 0139 012	MILE SEGMENT
178	01 0117 006	NUT
179	01 0112 06	WASHER
180	01 0550 13	PEDAL MOVEMENT GUIDE
181	01 0105 016	METAL SHEET SCREW
182	01 0123 025	SETSCREW
183	01 0014 56 PC	RECORD
184	01 0014 157	RECORD
185	01 0014 55 PC	RECORD
186	01 0024 090-2.5	O-RING
187	01 0024 065-3	O-RING
188	00 01 0028	AIR DISTRIBUTOR EXIT INJECTION
189	00 01 0027	AIR DISTRIBUTOR ENTER INJECTION
190	11 16 001	RUBBER HEAD
191	11 16 002	CYLINDER
192	01 0360 060-045-10	NUT-RING
193	47 28 000	BEAD BREAKER ARM GROUP
194	47 29 000	CRESCENT GROUP
195	01 0117 012	NUT
196	01 0064 100 12.9	BOLT
197	01 0114 43	BAKALITE NUT
198	80 11 002	TYRE REEL BODY METAL SHEET
199	80 11 003	TYRE REEL BODY GROUP
200	80 11 004	TYRE REEL CONNECTION METAL SHEET
201	80 08 001	CYLINDER
202	80 08 002	CYLINDER MAIN MILE
203	59 06 004	CYLINDER BACK CAP
204	59 06 003	CYLINDER FRONT CAP
205	01 0024 022-2	O-RING
206	01 0023 016	DUST SEAL
207	01 0021 012-20x5.5	NUT-RING
208	01 0014 62 NSE	RECORD
209	80 08 003	RUBBER HEAD
210	91 00 021	HOSE DIRECTION SHEET METAL
211	01 0073 016	BOLT
212	01 0024 014-3	O-RING
213	47 23 008-F	CROSS TOP SHEET METAL
214	47 23 008-D	CROSS BOTTOM SHEET METAL
215	47 23 008-E	SHEET BAR
216	91 05 026	PIN
217	01 0072 030	OBOLT
218	91 05 019	BUSHER
219	59 07 014	PULL GROUP
220	01 0115 008-04	NUT
221	59 07 009	SHAFT
222	01 0152 1-4 EK	VALVE

SPARE PARTS LIST		
Number	CODE	DESCRIPTION
223	01 0014 63 IPD	RECORD
224	01 0014 92	RECORD
225	11 12 005	RECORD
226	01 0024 008-4	O-RING
227	11 12 004	RECORD
228	01 0153 1-4SN	RECORD
229	01 0014 14	RECORD
230	11 00 022	TRADLE LINK BOLT
231	11TI 20 002	SHOCK TREADLE
232	11 12 010	FOOT TREADLE
233	01 0122 010	SETSCREW
234	11TI 20 007	SHEET METAL
235	11TI 20 000	FLANGE CYLINDER VALVE GROUP
236	11TI 20 003	SHOCK SHAFT
237	01 0031 06	SPRING
238	93TI 00 002	TREADLE PROJECT SHEET METAL
239	01 0014 13	RECORD
240	01 0014 12	RECORD
241	01 0014 61 PST	RECORD
242	01 0031 34	SPRING
243	01 0141 04-024	PIN
244	11 12 007	SHEET BAR
245	11 12 008	BUSHER
246	11 22 001	DISTRIBUTOR INLET GROUP
247	11TI 23 001	DISTRIBUTOR OUTLET GROUP
248	11 22 000	AIR DISTRIBUTOR GROUP
249	01 0014 181	RECORD



EU Declaration of Conformity

in accordance with directives : 2006/42/EU, 2014/35/EU, 2014/30/EU and 2014/68/EU

We : **Uni-trol Co. Ltd.**
Ul. Estrady 56
01-932 Warsaw

Poland

declare, on our joint responsibility with the manufacturer, that the product:

Tyre changer
Electro-mechanical-pneumatic device,
Type: MANAGER,
Serial number

concerned by this declaration, complies with all relevant requirements of the Machinery Directive:

- **directive 2006/42/EU (safety machines),**

applicable in the essential requirements and relevant conformity assessment procedures, as well as on the essential requirements of the following directives:

- **directive 2014/35/EU (the low voltage);**

- **directive 2014/30/EU (the electromagnetic compatibility);**

- **directive 2014/68/EU (pressure).**

In order to verification of compliance with the applicable legal regulations have been consulted harmonized standards and other normative documents:

PN-EN ISO 12100:2012P

Safety of machinery -- General principles for design – Risk assessment and risk reduction

PN-EN 61000-6-3:2008P

Electromagnetic compatibility (EMC) -- Part 6-3: General standards -- Emission standard for environments: residential, commercial and light industrial

PN-EN 61000-6-4:2008P

Electromagnetic compatibility (EMC) -- Part 6-4: General standards -- Emission standard for industrial environments

PN-EN ISO 13857:2010P

Safety of machinery - Safety distances to prevent hazard zones being reached by upper and lower limbs

PN-EN 349+A1:2010P

Safety of machinery - Minimum gaps to avoid crushing of parts of the human body

PN-EN 60204-1:2018P

Safety of machinery -- Electrical equipment of machines -- Part 1: General requirements

PN-EN 61293:2000P

Marking of electrical equipment with ratings related to electrical supply -- Safety requirements

[PN-EN ISO 4414:2011E](#)

Pneumatic fluid power - General rules and safety requirements for systems and their components

PN-EN ISO 11201:2012P

Acoustics -- Noise emitted by machinery and equipment -- Determination of emission sound pressure levels at a work station and at other specified positions in an essentially free field over a reflecting plane with negligible environmental corrections

PN-EN ISO11202:2012P

Acoustics -- Noise emitted by machinery and equipment -- Determination of emission sound pressure levels at a work station and at other specified positions applying approximate environmental corrections

PN-EN ISO 4871:2012P

Acoustics -- Declaration and verification of noise emission values of machinery and equipment

~~PN-EN 50419:2008P~~

Marking of electrical and electronic equipment in accordance with Article 11 (2) of Directive 2002/96/CE (WEEE)

The technical documentation of this device, referred to in point 1 of Annex VII A of the Machinery Directive, is located in the headquarters of manufacturer and will be made available to the competent national authorities for at least 10 years after the last piece.

The person responsible for the preparation of the technical documentation of the product and introducing changes in it, is MSc. Gregory Tworek.

This EC Declaration of Conformity will be kept by the manufacturer of the product for 10 years from the date of produce the last unit and will available for market supervisory authorities for verification.

MSc. Gregory Tworek

Warsaw, 30.10.2019

.....
Signature