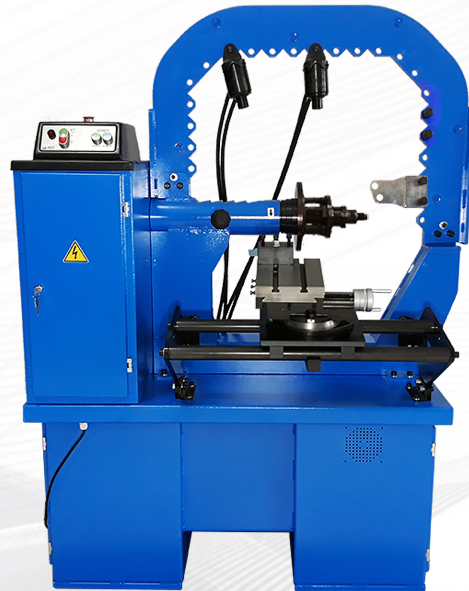


## PO-30H 2S

Wheel Rim Straightening Machine for steel and aluminum wheel rims 13"-30". A wheel rim is repaired by means of two hydraulic cylinders supplied with suitable working end caps of various shapes. Fixing disc with 6 holes and centering ring provide secure rim fixing independently on rim's holes number.

**Quick-release hydraulic clamp holder** provide fast, precise and secure rim fixing. This is an unique, unparalleled solution offered only by UNI-TROL.

Repair operations are easy and take not more than few minutes. Working end caps allow to fix a damaged wheel rim in any place of its deformation.



### Dane techniczne

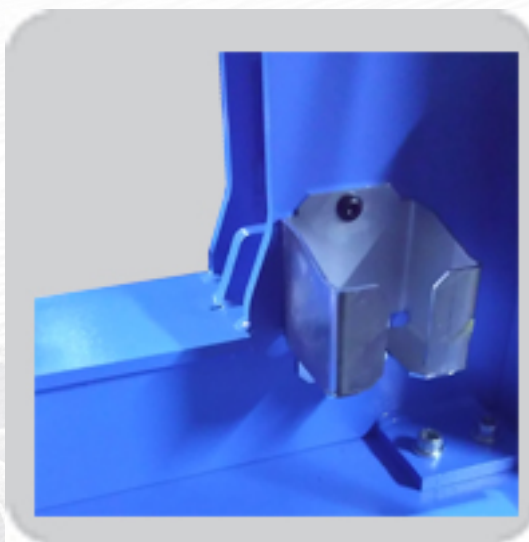
Weight	450 kg
Power of the drive engine	0,55 kW
Electric supply	3x400V / 50 Hz
Straightening cylinder force	45 kN
Repair rim diameter range	13" - 30"
Pump motor power	0,55 kW
max. hydraulic pump pressure	200 bar
noise level	75 dB

## Distinctive features:

---

### Reinforced and enlarged frame

#### Cylinder holder



#### Adjustable lathe offset

## Standard equipment:

---

- Working end caps of various shapes suitable for different rim deformations
- A set of centering rings for wheel rims of different central opening diameters
- Deformation positioning device
- Mounting plates with adjustable set screws
- Preliminary straightening lever

## Dostępne kolory



Kolory podstawowe



Kolory na zamówienie

