

TOTEM P LOT

TOTEM P LOT is a wheel balancer with laser measuring arm entering wheel parameters and guidance system directing the wheel to unbalance point. The system memorizes the data and shows precisely the weight position. The machine is equipped with ultrasonic sonar for contactless wheel width measurement and rim recognition system according to the entered parameters.

New operating system based on two buttons and a wheel as a selection cursor makes the machine very intuitive to use. Touchscreen LCD monitor makes the navigation through the menu even easier and faster. The machine can be equipped with a pneumatic clamp.



- Automatic positioning lock
- Laser measuring arm
- Laser line
- Automatic ultrasonic non-contact rim width acquisition
- ALU programmes
- 2 ALU programmes for motorbikes
- Optimization
- Programme "hidden weight"
- Voice synthesizer
- Touchscreen LCD monitor
- Pneumatic clamp and 3 cones
- LOT System (Laser on Top)

Dane techniczne

Rim diameter range:	10" - 30"
Rim width range:	2" - 15"
Maximum wheel weight	80 kg
Balancing accuracy	1 g
Measuring speed	140 obr/min
Power of the drive engine	80 W
Electric supply	230V/50 Hz
Pneumatic power supply	8 - 10 bar
Dimensions	1010/1350/1550
Weight	120 kg

Distinctive features:

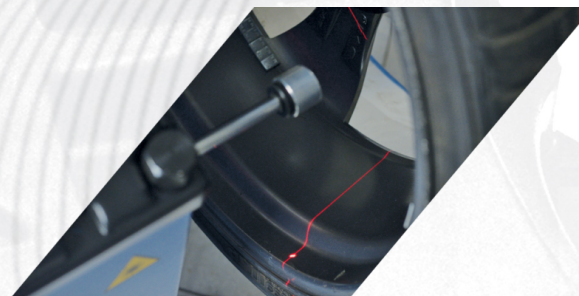
The new graphical interface provides easy navigation through the software. You move the cursor by rotating the wheel, and the two buttons, green and red, are used to confirm and cancel the selected functions.



A touch screen monitor provides faster operation through the wheel balancer's menu.



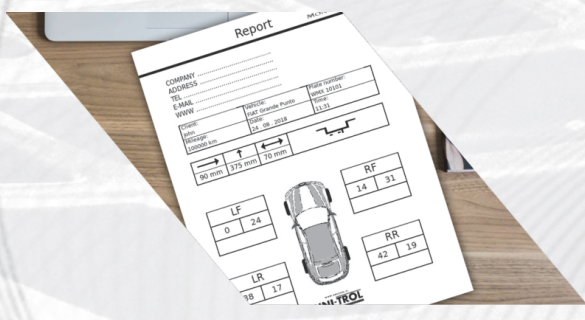
A precise laser indicator consisting of a laser line and dot ensures very accurate measurement of distance and rim diameter. Thanks to the laser's position at 5 o'clock, the operator can precisely see the spot where the weight should be attached.





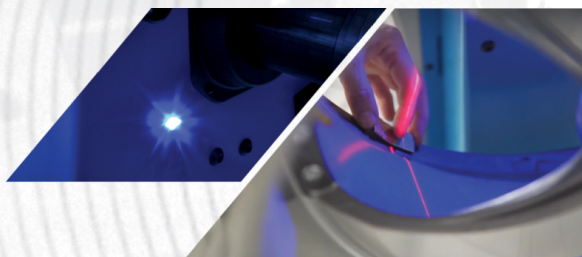
To navigate the cursor in the menu, we use the mounted wheel, rotating it in one direction or the other to select functions, then confirming with the green button. To exit a function, we press the red button.

Easy calibration is possible thanks to the use of a special calibrator; we no longer need to use a wheel. It's enough to attach the calibrator to the shaft and start the calibration procedure.



The machine is equipped with a report function that we can generate after completing wheel balancing on the vehicle. Thanks to the built-in USB port, the report can be saved as a PDF on a connected flash drive or, after connecting an appropriate printer, printed directly from the machine.

The work lighting is provided by a violet LED, which brightens the inside of the wheel, while the blue color enhances the visibility of the red laser line.





Wheel balancer is equipped with a system for automatically positioning the wheel at the spot where the weight will be attached or struck.

The pneumatic wheel holder is a proprietary design by Uni-Trol, ensuring faster wheel mounting. To standardize centering accessories, the holder is equipped with a traditional 40x3 shaft and a Haweka Pro-Grip nut.



The machine is equipped with the LOT system, which accurately positions the weight attachment at 12 o'clock by displaying the laser line and additional lighting.

Standard equipment:

- touch screen monitor,
- wheel guard with sonar,
- Pro-Grip nut 40x3,
- Cones 44-111.5 mm - 3 pcs.

Dostępne kolory



Kolory podstawowe



Kolory na zamówienie

