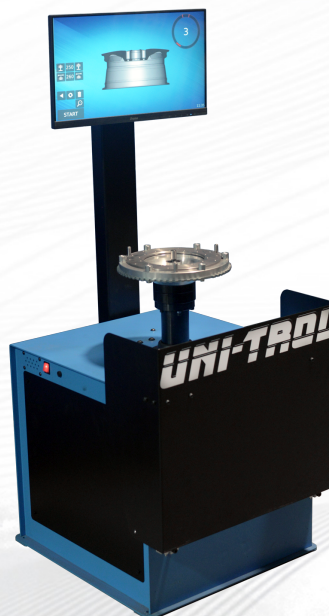


## Flywheel balancer 2451 WKZ

The 2451 WKZ flywheel balancer is a special machine built to order. In this version, it is used to balance flywheels in the production process, ensuring the highest class of balance of wheels leaving the factory. It is equipped with a 2451 series measurement system with a touch monitor.



### Dane techniczne

## Dostępne kolory



Kolory podstawowe



Kolory na zamówienie

