

## PO-30H

Wheel Rim Straightening Machine for steel and aluminum wheel rims 13"-30". A wheel rim is repaired by means of a hydraulic cylinder supplied with suitable working end caps of various shapes. Fixing disc with 6 holes and centering ring provide secure rim fixing independently on rim's holes number.

**Quick-release hydraulic clamp holder** provide fast, precise and secure rim fixing. This is an unique, unparalleled solution offered only by UNI-TROL.

Repair operations are easy and take not more than few minutes. Working end caps allow to fix a damaged wheel rim in any place of its deformation.



## Technical Data

Power of the drive engine	0,55 kW
Weight	450 kg
Repair rim diameter range	13" - 30"
Straightening cylinder force	45 kN
Electric supply	3x400V / 50 Hz
Pump motor power	0,55 kW
max. hydraulic pump pressure	200 bar
noise level	75 dB

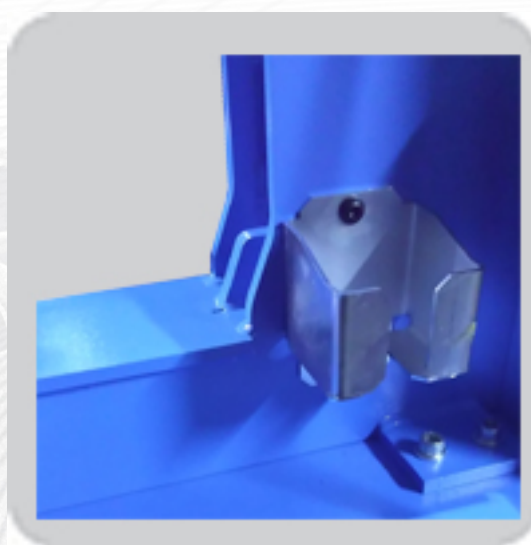
## Standard equipment:

---

- working end caps of various shapes suitable for different rim deformations
- a set of centering rings for wheel rims of different central opening diameters
- deformation positioning device
- mounting plates with adjustable set screws
- preliminary straightening lever

## Reinforced and enlarged frame

### Cylinder holder



### Adjustable lathe offset

