

PO-22H

Wheel Rim Straightening Machine for steel and aluminum wheel rims 13"-24". A wheel rim is repaired by means of a hydraulic cylinder supplied with suitable working end caps of various shapes. **Quick-release hydraulic clamp holder** provide fast, precise and secure rim fixing. This is a unique, unparalleled solution offered only by UNI-TROL.

Repair operations are easy and take not more than few minutes. Working end caps allow to fix a damaged wheel rim in any place of its deformation.



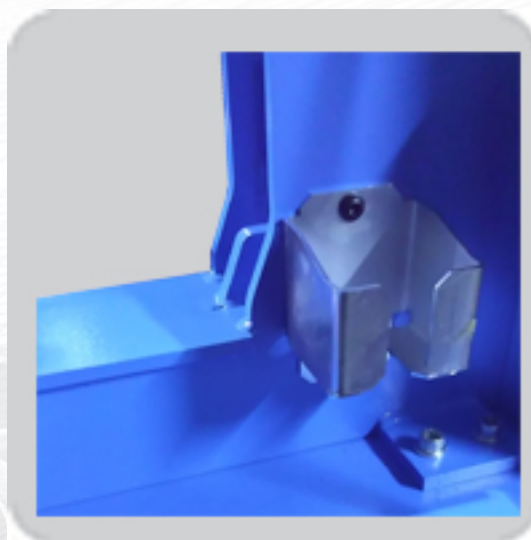
Dane techniczne

Power of the drive engine	0,55 kW
Weight	450 kg
Repair rim diameter range	13" - 24"
Straightening cylinder force	45 kN
Electric supply	3x400V / 50 Hz
Pump motor power	0,55 kW
max. hydraulic pump pressure	200 bar
noise level	75 dB

Distinctive features:

Reinforced and enlarged frame

Cylinder holder



Adjustable lathe offset

Standard equipment:

- working end caps of various shapes suitable for different rim deformations
- a set of centering rings for wheel rims of different central opening diameters
- deformation positioning device
- mounting plates with adjustable set screws
- preliminary straightening lever

Dostępne kolory



Kolory podstawowe



Kolory na zamówienie

Wyposażenie dodatkowe

Indeks	Opis	Zdjęcie
02.09.001	Zestaw tuleji centrujących 54-74mm 17szt	