

JANKA KK 2B



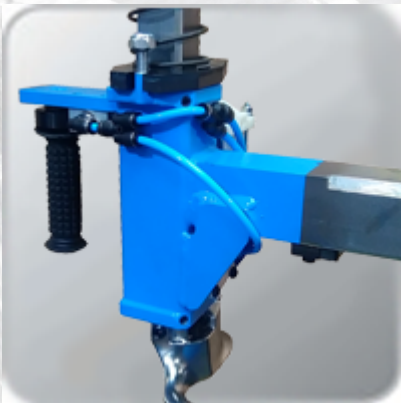
Dane techniczne

| | |
|-----------------------------|------------------|
| Outside clamping capacity | 10" - 26" |
| Max. wheel width | 15" |
| Max. wheel diameter | 1070 mm |
| Bead-breaker pressure force | 2800 kg |
| Pneumatic supply | 8 - 10 bar |
| Table rotation speed | 7/14 obr./min. |
| Electric supply | 3 x 400V / 50 Hz |
| Motor power | 1,1 kW |
| Weight | 300 kg |
| Wheel clamp | Pneumatic |
| Dimensions | 950/1520/900 |

Automatic tyre-changer for car and van wheels including RUNFLAT tyres. The column and the arm move and blocked pneumatically. The robust construction and two independent pneumatic arms saves operator time and effort. The tyres and wheels are handled with little effort and with the highest accuracy without the risk of tyre or rim damage. It also enables handling of aluminum rim wheels without any damage of delicate rim surface. The table of two clamping ranges till 23 " or 26". The tyre-changer is equipped with a 2-speed motor (7/14 rpm).

- strong and solid design
- two helpers - powerful pneumatic bead assist devices
- self-centering four jaws turntable
- tyre inflating gun with manometer
- set of jaw protectors for aluminum rims
- head roll guard
- tyre lever
- two-speed motor 7/14 rpm

Technological upgrades since January 2018:



- reinforced horizontal slide,
- grub screws to eliminate the lateral plays on slide during machine operation



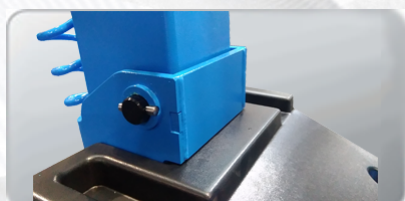
- pneumatic cylinder to block and eliminate the plays on vertical slide



- pneumatic cylinder on horizontal slide improves machine rigidity and eliminate the risk of rim damage



- grub screws to eliminate the plays during machine operation



- column axle pivot and adjusting pads make machine more rigid and durable



- ergonomic inside provides long and failureless functioning of the main components

- big and precise cylinder

Clamping range:

Dostępne kolory



Kolory podstawowe



Kolory na zamówienie

