

Wheel alignment VISIONLITH LIFT

VISIONLITH - Wheel Alignment for cars and vans up to 3.5t.

High resolution cameras and 3D technology provide quick and accurate measurement of vehicle dimensions and offer a number of procedures not available in infrared technology (CCD).

Movable camera beam makes **VISIONLITH** suitable for scissor lift, four-column lift and pit.

Automatic target tracking system is an additional advantage. The cameras automatically follow the lifted car. Mobile cabinet allows free movement between measuring stations. No calibration is needed.



Technical Data

Number of cameras	2
Toe range	$\pm 20^\circ$
Camber range	$\pm 10^\circ$
Caster range	$\pm 20^\circ$
Electric supply	230V, 50Hz
Rim clamping range	10 - 24''

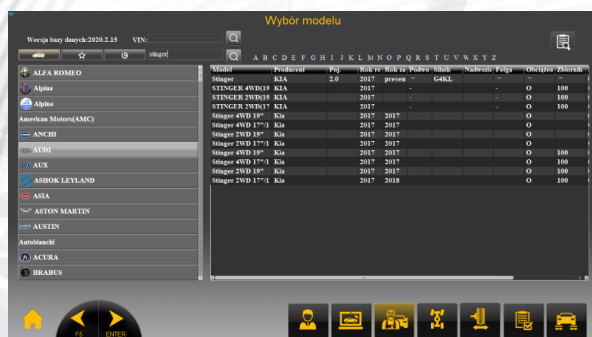
Distinctive features:

3D technology. High resolution cameras take pictures of targets and on this basis the system calculates the angles in vehicle suspension.

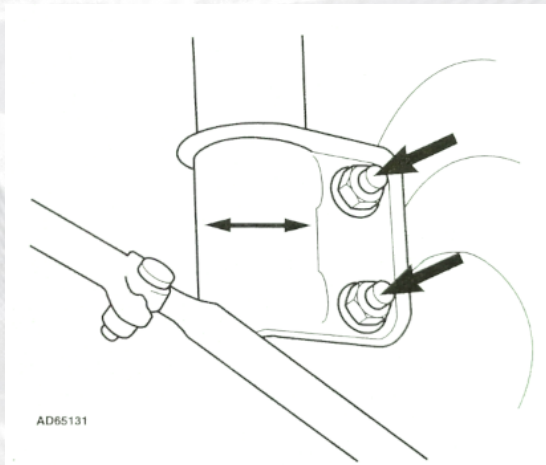


Passive targets attached to aluminum wheel clamps. The system quickly calculates the camber angle. No battery charging, no tangled power cables.

Automatic cameras height adjustment.
The system tracks the targets when raising / lowering the car on lift and cameras adjust their height automatically.



Autodata database with control points diagrams is the heart of VISIONLITH.



Tyres, suspension and vehicle condition **inspection report**. Before starting the measurement the operator can prepare an inspection report with information about vehicle technical condition. The report can be printed for the customer.



