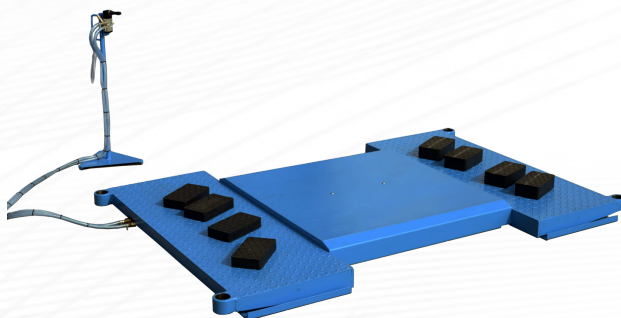


## PPS-3000

The **PPS-3000 lift** is designed for lifting passenger cars and light trucks to simultaneously remove or install all wheels. It is equipped with two air cushions and has a maximum lifting capacity of 3000 kg.



### Technical Data

Pneumatic power supply	7-10 bar
Weight	500 kg
Max. height	380 mm
Outside dimensions without floor ramp	2100x1420 mm
with floor ramp	2100x3760 mm
Min. height	80 mm
Working temperature	- 4 st.C ÷ + 40 st.C
Pneumatic supply	do 7 bar
Capacity	3000 kg

## Standard equipment:

---

- Safety rails
- Rubber pads
- Controls

## Optional equipment:

---

- Rotating arms
- Short ramps (335x500 mm)
- Long ramps (1175x500 mm)



