

PO-30

Wheel Rim Straightening Machine for steel and aluminum wheel rims 13"-30". A wheel rim is repaired by means of a hydraulic cylinder supplied with suitable working end caps of various shapes. Fixing disc with 6 holes and centering ring provide secure rim fixing independently on rim's holes number. Excellent for rims without central hole.

Repair operations are easy and take not more than few minutes. Working end caps allow to fix a damaged wheel rim in any place of its deformation.



Technical Data

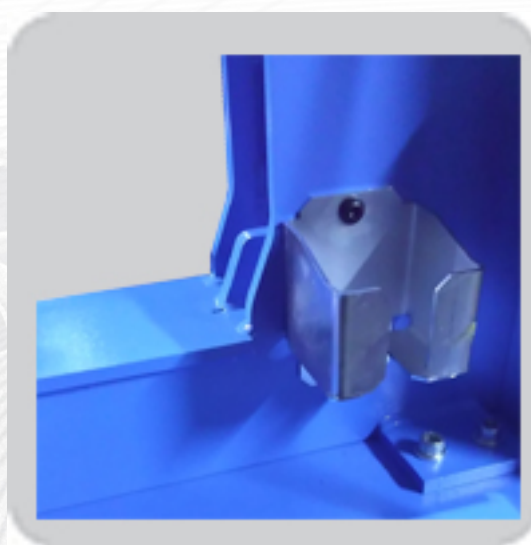
Weight	450 kg
Power of the drive engine	0,55 kW
Electric supply	3x400V / 50 Hz
Straightening cylinder force	45 kN
Repair rim diameter range	13" - 30"
Pump motor power	0,55 kW
max. hydraulic pump pressure	200 bar
noise level	75 dB

Standard equipment:

- working end caps of various shapes suitable for different rim deformations
- a set of centering rings for wheel rims of different central opening diameters
- deformation positioning device
- mounting plates with adjustable set screws
- preliminary straightening lever

Reinforced and enlarged frame

Cylinder holder



Adjustable lathe offset

