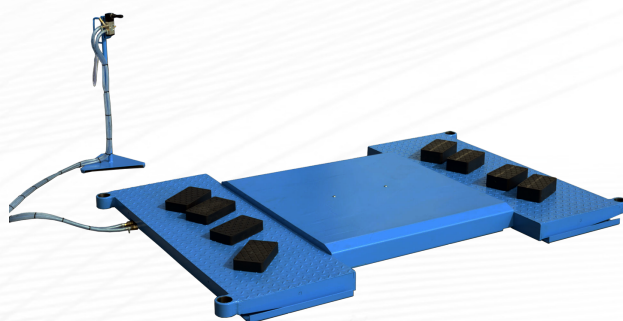


PPS-5

The **PPS-5 lift** is designed for lifting passenger cars and light trucks to simultaneously remove or install all wheels. It is equipped with a single air cushion and has a maximum lifting capacity of 2000 kg.



Technical Data

Capacity	2000 kg
Lifting height	380 mm / 680 mm (z łapami)
Min. height	80 mm
Outside dimensions without floor ramp	2100 mm x 1400 mm
with floor ramp	2100 mm x 1950 mm
Working temperature	- 4 st.C ÷ + 40 st.C
Pneumatic supply	do 7 bar
Pneumatic power supply	7-10 bar
Weight	400 kg

Standard equipment:

- Safety rails
- Rubber pads
- Controls

Optional equipment:

- Rotating arms
- Short ramps (335x500 mm)
- Long ramps (1175x500 mm)

