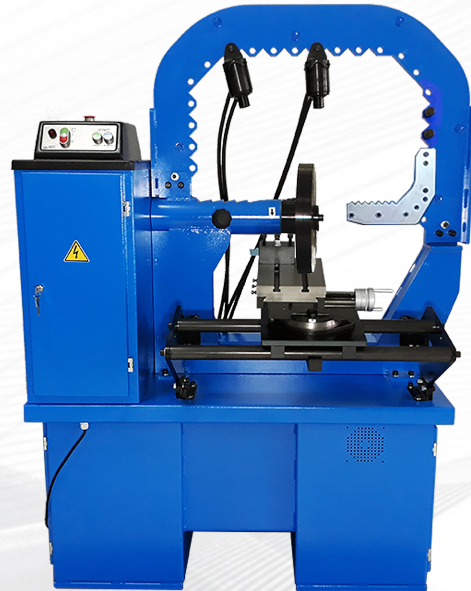


PO-30 2S

Wheel Rim Straightening Machine for steel and aluminum wheel rims 13"-30". A wheel rim is repaired by means of two hydraulic cylinders supplied with suitable working end caps of various shapes. Fixing disc with 6 holes and centering ring provide secure rim fixing independently on rim's holes number.

Repair operations are easy and take not more than few minutes. Working end caps allow to fix a damaged wheel rim in any place of its deformation.

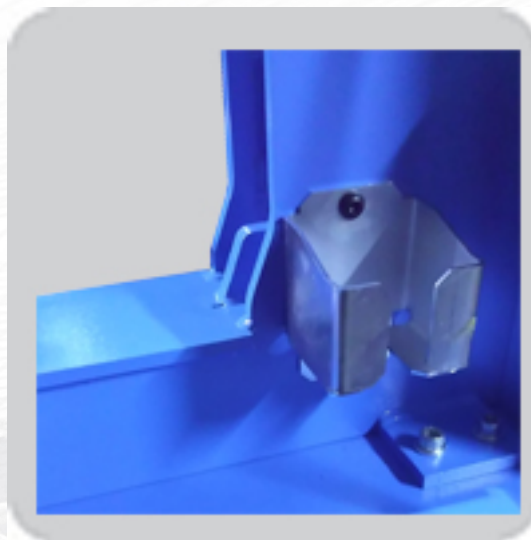


Dane techniczne

Repair rim diameter range	13" - 30"
Straightening cylinder force	45 kN
Pump motor power	0,55 kW
max. hydraulic pump pressure	200 bar
noise level	75 dB
Electric supply	3x400V / 50 Hz
Power of the drive engine	0,55 kW
Weight	450 kg

Advantages:

**reinforced and enlarged frame
cylinder holder**



adjustable lathe offset

The wheel rim straightening machine is equipped with:

- working end caps of various shapes suitable for different rim deformations
- a set of centering rings for wheel rims of different central opening diameters
- deformation positioning device
- mounting plates with adjustable set screws
- preliminary straightening lever

Dostępne kolory



Kolory podstawowe



Kolory na zamówienie

Wyposażenie dodatkowe

Indeks	Opis	Zdjęcie
02.09.001	Zestaw tuleji centrujących 54-74mm 17szt	